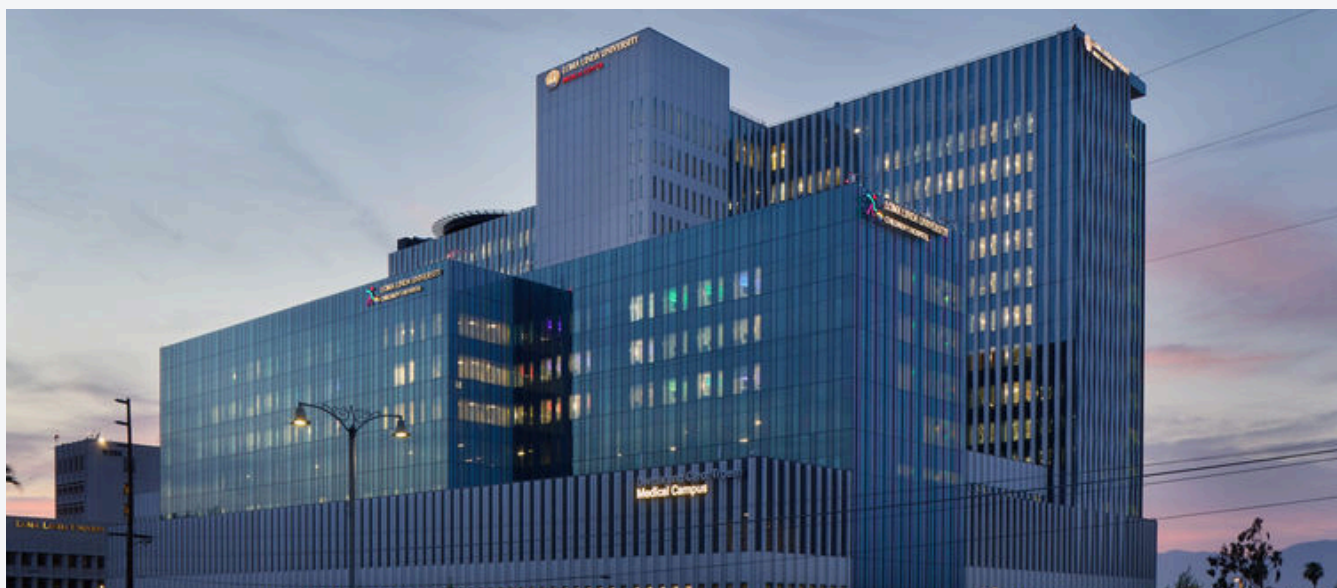




LOMA LINDA UNIVERSITY

FACULTY MEDICAL GROUP

Adult Services



OUR MISSION, VISION & VALUES

MISSION

Our mission is to continue the teaching and healing ministry of Jesus Christ. We are committed “to make man whole,” in a setting of advancing medical science and providing a stimulating clinical and research environment for the education of physicians, nurses and other health professionals.

VISION

Transforming lives through education, healthcare and research.

VALUES

Compassion: reflects the love of God with respect, mercy and empathy.

Excellence: exceeds expectations with effectiveness, reliability and efficiency.

Humility: puts self-importance aside for the greater good of others.

Integrity: carries out actions with honesty and trustworthiness.

Justice: commits to diversity, equity and inclusion.

Teamwork: collaborates to achieve a shared purpose.

Wholeness: actively living the physical, relational, intellectual, spiritual and mental (PRISM) principles within a loving relationship with God and shown through service to others.



OUR LEADERSHIP

Loma Linda University Faculty Medical Group remains steadfast in its dedication to the well-being of our distinguished faculty, esteemed colleagues, and the broader community. The achievement of these objectives serves as a testament to the resolute commitment and visionary guidance of our esteemed team.



PRESIDENT

Ricardo Peverini, MD



CHIEF FINANCIAL OFFICER

Robert Martin, MD



CHIEF OPERATING OFFICER

Laren Tan, MD, MBA



CHIEF COMPLIANCE OFFICER

Ryan Lauer, MD



CORPORATE SECRETARY

Herbert Ruckle, MD



OUR LEADERSHIP

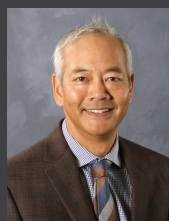
At Loma Linda University Faculty Medical Group, our dedicated team of vice presidents plays a vital role in fostering the well-being of our esteemed faculty, colleagues, and the broader community. Through their collective leadership, strategic vision, and unwavering commitment, they work collaboratively to drive initiatives that enhance our mission and strengthen our impact.



VP, ADMINISTRATION AND PROFESSIONAL EMPLOYMENT
Barbara Sharp



VP, FINANCE
Stella Kim



VP, AMBULATORY HEALTHCARE EXPERIENCE
Bryan Tsao, MD, MBA



VP, HEALTH INFORMATICS
David Sanner, MD



VP, AMBULATORY OPERATIONS
Julia Perez



VP, VALUE-BASED CARE AND QUALITY
Todd Martell, MD, MBA



VP, BUSINESS ANALYTICS AND INFORMATICS
Padmini Davamony



VP, SURGICAL OPERATIONS
Alfred Simental, MD, MBA



WHO WE ARE

- Excellence in *education, research, and clinical care* •

Started in 1995 by the leadership of Loma Linda University School of Medicine, our medical group began as a physician-led administrative team supporting all disciplines dedicated to the care and wellbeing of Southern California's Inland Empire. Today, we have grown to 1,300+ providers in a variety of practice settings.

Through our affiliation with Loma Linda University School of Medicine and the hospital system of Loma Linda University Health, we support the mission of six hospitals and multiple clinics. We also provide clinical services at Riverside University Health System, Veteran Affairs Loma Linda Healthcare System and the Arrowhead Regional Medical Center.

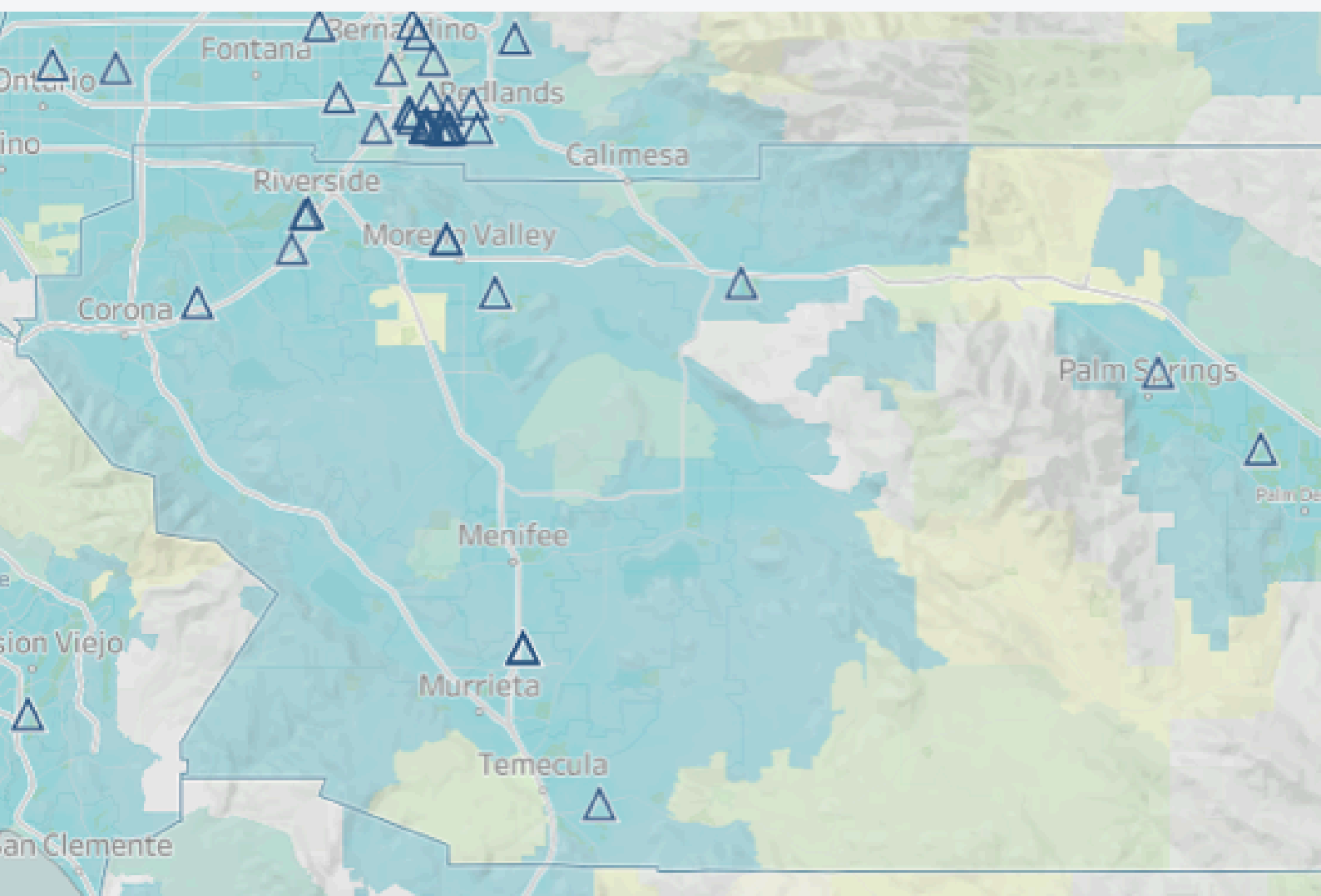
We answer a higher calling to make man whole, advancing our mission to continue the teaching and healing ministry of Jesus Christ.



LLUFMG IN THE COMMUNITY

Serving our community since 1995, LLUFMG continues to expand and provide expert care throughout Southern California and beyond. With over 150 locations for patients to choose from, we have made it easier for patients to receive their care.

- | | | | |
|------------------|---------------|------------------|----------------|
| Beaumont/Banning | Hesperia | Murrieta | Riverside |
| Colton | Highland | Palm Desert | San Bernardino |
| Corona | Las Vegas | Rancho Cucamonga | Upland |
| Hemet | Loma Linda | Rancho Mirage | Victorville |
| Hesperia | Moreno Valley | Redlands | |



LLUFMG IN THE COMMUNITY



RANCHO CUCAMONGA

One of our newest locations offering services in 7 specialties: adult cardiology, ear, nose, and throat, general gynecology and obstetrics, maternal-fetal medicine, neurology, neurological surgery, ophthalmology and outpatient behavioral health. We have a virtual tour available for this location.



LOMA LINDA SURGICAL INSTITUTE

Loma Linda University Faculty Medical Group is proud to be a partner in expanding our reach and surgical capacity at the new ambulatory surgical center. Specialties supported by the institute include ophthalmology, orthopedic surgery, pain management, spine surgery, urology, gynecology, cardiology, general surgery, gastroenterology, and neurosurgery.



OUR ADULT SPECIALTIES



Allergy & Immunology

Cardiology

Cardiothoracic Surgery

Dermatology

Emergency Medicine

Endocrinology

Family Medicine

Gastroenterology & Hepatology

General Internal Medicine

Hematology-Oncology

Infectious Diseases

Nephrology

Neurointerventional Radiology

Neurology

Neurosurgery

- Brain Tumor Program
- Cerebrovascular & Endovascular Surgery
- Cranial Surgery
- Spine & Nerve Surgery

Obstetrics & Gynecology

- Gynecology, Pelvic Surgery & Urogynecology
- Gynecological Oncology
- Maternal-Fetal Medicine
- Reproductive Endocrinology & Infertility

Occupational Medicine

Ophthalmology

Orthopaedic Surgery

Otolaryngology Head & Neck Surgery

Physical Medicine & Rehabilitation

- Pain Medicine
- Neuropsychology

Plastic Surgery

Preventive Medicine

Pulmonary, Critical Care, Hyperbaric, Sleep Medicine

Radiation Medicine

Rheumatology

Surgery

- Acute Care
- Colon & Rectal Surgery
- Minimally Invasive / General Surgery
- Surgical Oncology
- Transplant Institute
- Vascular Surgery

Transplant/Cell Therapy

Urology

Vascular & Interventional Radiology





DIVISION HEAD
Luis Sacca, MD

ABOUT US

- The largest referral center for adult Allergy & Immunology in the Inland Empire.

LLUH is the only center or most performing in the Inland Empire for these procedures and services:

- Multidisciplinary allergy and pulmonology care for severe asthma with advanced biologic medication and targeted allergen immunotherapy.
- Chronic rhinitis and evaluation for personalized allergen immunotherapy.
- Management of chronic urticaria & angioedema with advanced biologic medication.
- Drug allergy and desensitization.
- Hereditary and acquired angioedema.
- Food allergy.
- Anaphylaxis.
- Insect allergy.
- Suspected immunodeficiency disorder.
- Eosinophilic esophagitis.



For more information,
please scan the QR code
or click [here](#)





DIVISION HEAD
Antoine Sakr, MD

ABOUT US

- We provide the most advanced cardiac care in the region and have the HeartCARE Center for National Distinction of Excellence. Through our multidisciplinary approach to cardiology, we ensure patients have access to a full range of clinical services within our specialty care facilities. This unique team approach brings together doctors across multiple medical specialties to develop comprehensive, personalized treatment plans that are tailored to each patient's needs, requirements, and overall well-being.
- Loma Linda University International Heart Institute is a state-of-the-art care facility with highly trained specialists and advanced technology. Patients with unusual and complex medical conditions have direct access to Loma Linda University Medical Center's services, facilities, and an experienced team of physicians, nurses, and professionals.
- We are an American College of Cardiology (ACC) Accredited Chest Pain Center, and ACC Accredited Comprehensive Heart Failure Program and are certified as an ACC Transcatheter Valve Center (TVT). We are the region's only accredited Adult Congenital Heart Disease (ACHD) program.
- We participate in the public reporting of the CathPCI Registry®, Electrophysiology (EP) Device Implant Registry™ and STS/ACC TVT Registry™.
- We also participate in many clinical trials that our patients can participate in provided they meet selection criteria. Please click [here](#) for current clinical trial offerings.

LLUH is the only center or most performing in the Inland Empire for these procedures and services:

- Our cardiologists provide personalized treatment and offer a range of services in our cardiology clinic. We utilize advanced technology for accurate diagnosis and a personalized treatment plan.
 - **General cardiology clinic** - We see patients for a variety of cardiovascular symptoms like chest pain, shortness of breath, and palpitations with readily available appointments and faster follow up.
 - **Women's heart clinic** - Our expert cardiologists at the Women's heart clinic treat heart disease while addressing the distinct concerns of women. We treat conditions like INOCA, MINOCA, and provide comprehensive care to pregnant patients with complex cardiovascular issues.
 - **Hypertension clinic** - We provide regular 24-hour BP monitoring and treatment for primary and secondary hypertension issues.
 - **Vascular clinic** offers comprehensive care for diseases of the vascular system (blood vessels) including peripheral artery disease, diffuse and premature atherosclerosis, venous disease, and varicose veins. We also perform complex peripheral arterial and venous interventions.
 - **Adult Congenital Heart Disease (ACHD)** program offers multi-disciplinary care for complex ACHD patients, including offering complex transcatheter and arrhythmia management for ACHD patients. We also provide specialized care for pregnant patients with rare congenital disorder.
 - **Cardiogenetic clinic** provides comprehensive cardiovascular evaluations, genetic counseling, genetic testing and individualized treatment plans.



**For more information,
please scan the QR code
or click [here](#)**





LLUH is the only center or most performing in the Inland Empire for these procedures and services:

- Our Advanced heart failure program at Loma Linda University International Heart Institute provides a comprehensive assessment and treatment plan for patients with congestive heart failure and all types of heart muscle disease (cardiomyopathy). Our dedicated team of experts collaborate across specialties and care teams to provide comprehensive care. We offer:
 - Heart transplantation.
 - Left ventricular assist device as bridge to transplant and destination therapy.
 - 24/7 multidisciplinary cardiogenic shock team unique to Inland Empire.
 - Early (7-14 days) post hospital discharge clinic to reduce readmission.
 - Cardiology diuretic infusion clinic Monday- Friday.
 - Multidisciplinary HCM clinic. We offer septal ablation therapy and septal myectomy for selected patients who do not respond to medical therapy.
 - Treatment for both ATTR and AL cardiac amyloidosis and genetic counseling clinic.
 - Cardiooncology clinic offering advice and guidance to people with a high risk of heart disease or existing heart disease before cancer therapy.
 - Implantable pulmonary artery pressure and remote monitoring program.
 - Advanced cardiovascular imaging program.
 - As a leading center in cardiac imaging in the Inland empire, we offer access to the state of art cardiac imaging technology for accurate diagnosis of patients with cardiovascular symptoms in collaboration with department of radiology. We offer,
 - Transthoracic echocardiogram (TTE), including strain imaging, 3D echocardiography.
 - Transesophageal echocardiogram (TEE), including imaging for complex structural cardiovascular interventions and cardiovascular surgery.
 - Cardiac CT and MRI.
 - Cardiac SPECT scan.
 - Cardiac PYP scan.
 - Cardiac CT, Cardiac MRI, TTE and TEE for complex congenital diagnosis.
- Top Electrophysiology Arrhythmia program, specializing in both pediatrics and adults, offers the latest treatments and technologies for the care of patents with heart rhythm disorders in addition to.
 - Device lead extraction.
 - Complex atrial fibrillation ablation.
 - Complex ventricular fibrillation ablation.
 - Appendage closure programs.
- Top Interventional cardiology Program specializing in high risk interventional cardiac and peripheral procedures.
 - Complex and high-risk percutaneous coronary intervention including the use of laser and orbital and rotational atherectomy devices.
 - Percutaneous treatment of chronic total occlusions.
 - Comprehensive cardiogenic shock care center.
 - Peripheral arterial and venous interventions.
 - Implantable pulmonary artery pressure and remote monitoring.
- Top structural program in the inland empire offering services in a Multidisciplinary patient-centered approach including offering alternative transcatheter therapies when open heart surgery as not recommended or is very high risk. We perform
 - Transcatheter aortic valve replacement (TAVR).
 - Mitraclip.
 - Percutaneous closure of atrial septal defects and patent foramen ovale.



**For more information,
please scan the QR code
or click [here](#)**





DEPARTMENT CHAIR

Joshua Chung, MD

ABOUT US

- Loma Linda University Department of Cardiothoracic Surgery is comprised of a team of experts dedicated to improving patient health. With decades of clinical experience, our surgeons are leaders in the surgical treatment of all types of diseases of the chest.
- Our surgeons use the most advanced equipment and latest surgical techniques including minimally invasive surgery and video-assisted thoracic surgery to achieve the best possible outcomes. With decades of clinical experience, our surgeons along with the support of cardiologists, nurse practitioners, and other specialists perform the most straightforward to the most complex cardiothoracic procedures on adults, children, and newborns.

LLUH is the only center or most performing in the Inland Empire for these procedures and services:

- Robotic atrial fibrillation surgery.
- Extracorporeal membrane oxygenation (ECMO), adults and children.
- Implantable left ventricular assist devices.
- Heart transplantation.
- Robotic mitral valve surgery.
- Surgery for pediatric and adult congenital heart malformations (Center of Excellence).
- Surgery for hypertrophic obstructive cardiomyopathy (HOCM).
- Aortic surgery.

LLUH is a quaternary referral center – provides higher-level care for these conditions:

- Extracorporeal membrane oxygenation (ECMO), adults and children.
- Implantable left ventricular assist devices.
- Heart transplantation.
- Robotic mitral valve surgery.
- Surgery for pediatric and adult congenital heart malformations (Center of Excellence).
- Surgery for hypertrophic obstructive cardiomyopathy (HOCM).
- Aortic surgery.
- Robotic atrial fibrillation surgery.



For more information,
please scan the QR code
or click [here](#)





DEPARTMENT CHAIR

Joshua Chung, MD

ABOUT US

- Loma Linda University Department of Cardiothoracic Surgery is comprised of a team of experts dedicated to improving patient health. With decades of clinical experience, our surgeons are leaders in the surgical treatment of all types of diseases of the chest.
- Our surgeons utilize the most advanced equipment and latest surgical techniques including minimally invasive techniques, including robotic and video-assisted thoracic surgery to achieve the best possible outcomes. Our surgeons along with the support of pulmonologists, gastroenterologists, medical oncologists, and other specialists provide a multidisciplinary oncologic approach to thoracic malignancy. This approach includes same-anesthetic events where robotic bronchoscopy is performed to diagnose cancer and a robotic lung cancer operation is performed under the same anesthesia to expedite patient care. With decades of clinical experience, our surgeons perform the most straightforward to the most complex thoracic procedures on adults and children.

LLUH is the only center or most performing in the Inland Empire for these procedures and services:

- Same-anesthetic events involving IP and thoracic surgery.
- Robotic lung cancer surgery.
- Robotic esophageal cancer surgery.
- Complex chest wall resection and reconstruction.
- Surgery for pleural disease.
- Robotic diaphragm surgery.
- Robotic cardiac sympathectomy.

LLUH is a quaternary referral center – provides higher-level care for these conditions:

- Same-anesthetic events involving IP and thoracic surgery.
- Robotic lung cancer surgery.
- Robotic esophageal cancer surgery.
- Complex chest wall resection and reconstruction.
- Surgery for pleural disease.
- Robotic diaphragm surgery.
- Robotic cardiac sympathectomy.



For more information,
please scan the QR code
or click [here](#)





DEPARTMENT CHAIR
Harry Dao, MD

ABOUT US

- The Loma Linda University Health dermatology clinic offers a wide range of treatments for patients with skin problems.
- General Medical Dermatology
 - Skin cancer screenings as well as personalized treatments for acne, rosacea, eczema, and warts, amongst other diagnoses.
- Complex Medical Dermatology
 - LLU Dermatology is a tertiary referral center for complex medical dermatologic issues, including immunobullous disease, connective tissue disease with skin involvement, pyoderma gangrenosum, hidradenitis suppurativa, psoriasis, and atopic dermatitis.
 - Phototherapy services are available to treat many skin conditions including but not limited to vitiligo, uremic pruritus, cutaneous lymphoma, lichen planus, and psoriasis.
- Dermatologic Oncology and Mohs surgery
 - LLU Dermatology serves as a tertiary referral center for the most complex and aggressive skin cancers.
 - Expertise in the management of skin cancers including, but not limited to basal cell carcinoma, squamous cell carcinoma, melanoma, sebaceous carcinoma, adnexal carcinomas, extramammary Paget's disease, and dermatofibrosarcoma protuberans.
 - Immunohistochemistry in the Mohs surgical management of complex dermatologic cancers, including melanoma and squamous cell carcinoma.
 - Collaboration with experts in surgical oncology, head and neck oncology, radiation oncology, medical oncology, pathology, radiology, and plastic surgery, for the multidisciplinary management of aggressive and complex tumors.
 - Long-term management of topical and systemic medications to decrease the development of additional precancerous lesions and skin cancers.

- Pediatric Dermatology
 - Availability of pediatric dermatologist in the care of common and rare dermatologic conditions, including atopic dermatitis, vascular birthmarks, autoimmune diseases, and inherited disorders.
- Cosmetic Dermatology
 - Broad range of neurotoxins, fillers, lasers, and aesthetician services to meet a broad range of cosmetic needs.

LLUH is the only center or most performing in the Inland Empire for these procedures and services:

- Phototherapy
 - Narrowband ultraviolet B, full-body as well as hand/foot unit.
- Photodynamic therapy (PDT)
 - Available to treat extensive photodamage, in efforts to prevent non-melanoma skin cancers.
- T.R.U.E. TEST patch testing
 - The only FDA-approved diagnostic test for allergic contact dermatitis.
- Alopecia areata
 - Multiple treatment options including squaric acid.
- Platelet-rich plasma therapy
 - This is a procedure whereby the patient's blood is drawn and centrifuged. The plasma portion containing growth factors is then injected back into the patient's scalp to help induce hair growth.
- Dermatopathology services
 - Availability of three dermatopathologists to provide timely and reliable dermatopathology slide reading.
- Mohs for melanoma and squamous cell carcinoma
 - Availability of immunohistochemistry in the Mohs surgical management.



**For more information,
please scan the QR code
or click [here](#)**





DEPARTMENT CHAIR
Lea Walters, MD

ABOUT US

- Our emergency departments are staffed by a team of experts, including board-certified emergency medicine physicians, emergency and trauma nurses, and a variety of other specialists. Our team treats more than 75,000 patients each year, including up to 3,000 of the most critical trauma patients.
- As one of the region's two Level 1 trauma centers, we provide San Bernardino, Riverside, Inyo, and Mono counties with the most advanced trauma care available. We also provide patients rapid intervention for acute strokes and heart attacks as a designated Comprehensive Stroke Center and Chest Pain Center.

LLUH is the only center or most performing in the Inland Empire for these procedures and services:

- The only Level 1 Pediatric Trauma center in the region.
- Only Pediatric Emergency Medicine Department in the region.
- Specialists in the use of bedside point of care ultrasound in resuscitation.
- Medical toxicology and envenomation specialists.
- Mobile telemedicine vehicle (MTV) to respond to multi-casualty incidents (MCI), disaster, and event medicine venues.
- Advanced Urgent Care.



For more information,
please scan the QR code
or click [here](#)





DIVISION HEAD
Kevin Codorniz, MD

ABOUT US

- The Division of Endocrinology of Loma Linda University Health is dedicated to serving the community of the Inland Empire as well as the extended, treating the full spectrum of hormonal and metabolic disorders.
- Our faculty provide expert, patient-centered care for the full variety of Endocrine disorders and stands out by heading one of the area's largest Diabetes Educational Centers in the Diabetes Treatment Center.
- Within the Division of Endocrinology, we are involved in several cutting-edge Diabetes research studies, helping to examine new Diabetes medications and Technologies.
- We provide leading-edge therapy for osteoporosis care.
- In 2021, U.S. News & World Report named us high performing in endocrinology, recognizing our care as significantly better than the national average.

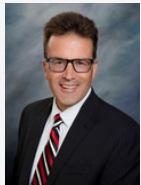
LLUH is the only center or most performing in the Inland Empire for these procedures and services:

- Comprehensive Diabetes Education services through the Diabetes Treatment Center.
- The ability for patients to be involved in diabetes research opportunities.
- Tertiary hospital care for the full spectrum of endocrine disorders.
- Dedicated osteoporosis clinic services in coordination with the Center of Excellence for Osteoporosis at Loma Linda University Health.



For more information,
please scan the QR code
or click [here](#)





DEPARTMENT CHAIR
Daniel Reichert, MD

ABOUT US

- Our Family Medicine physicians, nurse practitioners, and physician assistants are devoted to caring for you and your family from childhood to adolescence and adulthood to retirement. We are specialists in the delivery of primary care with a desire to keep your entire family healthy and cared for under one umbrella. We value the benefits of maintaining continuity of care over time with shared decision making between your primary care provider and you.

Our areas of expertise include:

- Primary Care
 - Family-centered medical care for patients of all ages.
 - Physical exams including health maintenance and preventive care, uniquely incorporating lifestyle medicine into your care plan.
 - Extensive evaluations to establish an accurate diagnosis and determine the appropriate management for conditions involving the entire spectrum of body systems for chronic and acute illnesses.
 - Physical exams, well woman exams and well child exams.
 - We help manage access to an extensive breadth of specialty care and diagnostic testing.
 - We perform minor office procedures including joint injections, trigger point injections, skin biopsies, nail procedures, IUD insertion, Nexplanon insertion, and more.
 - Our Ambulatory Clinics had 92,300 visits last year. Over 48,000 individual patients have been cared for over the last 3 years.
- Urgent Care
 - Walk-in urgent care, with same-day appointment scheduling online. We see about 22,000 visits per year serving the community. In addition to cold and flu symptoms, we see:
 - Fractures, sprains and strains.
 - Pink eye, allergies and asthma.
 - Ear, eye and throat pain.
 - Wound and injury care.
 - Laceration repair.
 - Walk-in sports physicians.
 - Headaches.
 - UTI, STD Treatment, and more.

- Cosmetic Clinic
 - Our cosmetic clinic offers services for anti-aging, including:
 - Laser hair removal, spider veins, skin rejuvenation and acne treatments.
 - Botox, Jeuveau and Juvederm, Kybella, and Latisse eyelash solution.
 - Obagi skin care, eye lash, and eyebrow products.

LLUH is the only center or most performing in the Inland Empire for these procedures and services:

- Integrated primary care with lifestyle medicine.
- Palliative Care Division – comprehensive inpatient and outpatient care, including end-of-life planning and goal setting.
- Geriatrics Division – specialized consultations in memory and cognitive assessment, osteoporosis management, gait assessment for frequent falls, power mobility assessment, complex care consultations for multiple comorbidities, assisted living and conservatorship assessment and form completion.



For more information,
please scan the QR code
or click [here](#)





DIVISION HEAD
Andrew Chang, MD

ABOUT US

- From inflammatory bowel disease (IBD) to colorectal cancer and all types of liver disease, we offer leading-edge treatments for GI and liver disorders. In addition, our specialists treat more digestive disease patients than any other center in the region.
- Loma Linda University Medical Center was ranked #42 in the nation in gastroenterology for 2019-20 by U.S. News & World Report.
- We have been named a Center of Excellence for liver transplantation by multiple agencies.
- Our Prehabilitation Program for waitlisted patients helps prepare them mentally and physically prior to their transplant surgery.
- We are one of only a few centers in Southern California to offer fecal microbiota transplantation and biofeedback for pelvic floor disorders.
- We offer the most advanced treatments and technologies found only in major metropolitan academic medical centers.
- As a teaching hospital, we have all the specialists necessary onsite to treat complex GI and liver conditions in a single integrated team.
- Multidisciplinary fatty liver clinic and clinical trials for fatty liver disease.
- Patient support groups and GI special events.

LLUH is the only center or most performing in the Inland Empire for these procedures and services:

- Double balloon endoscopy.
- Endoscopic mucosal resection of early esophageal cancer.
- Endoscopic pancreatic necrosectomy.
- Endoscopic submucosal dissection (for large polyps/superficial tumors).
- Endoscopic suturing (for enteral fistulas).
- Endoscopic retrograde cholangiopancreatography (ERCP) with cholangioscopy.
- ERCP with pancreatic cyst drainage.
- Fecal transplantation.
- Liver transplantation.
- Luminal stenting.
- Multidisciplinary care for hepatocellular carcinoma.
- Multidisciplinary care for inflammatory bowel disease.
- Peroral endoscopic myotomy (for achalasia).
- Transoral incisionless fundoplication (for GERD).



For more information,
please scan the QR code
or click [here](#)





DIVISION HEAD

Pamela Lobo Moreno, MD

ABOUT US

- Internal Medicine physicians are specialists who apply scientific knowledge and clinical expertise to the diagnosis, treatment, and compassionate care of adults across the spectrum from preventative medicine to complex illness.
- Our team of board-certified internists serve as Primary Care Providers (PCP) to our complex community of the Inland Empire. Loma Linda being a leader on transplant and oncology patients, we serve as primary care physicians to these patients to manage all their other conditions or needs.
- We provide care and help co-manage the most complex patients, assisting in treating cardiac conditions, diabetes, pulmonary conditions as well as multiple chronic illnesses, geriatric patient care, and pre-operative assessments.
- General internists gather information and make connections from multiple data sets and identify solutions for optimal health outcomes.
- We maintain every patient's preventative health, including physicals and well women examinations with pap smears.

LLUH is the only center or most performing in the Inland Empire for these procedures and services:

- Collaborative care for complex transplant and cancer patients, providing general care and preventative health for these patients.
- Clinic procedures include skin biopsies, abscess drainages, sutures, intraarticular joint injections, ingrown toenails.
- Pre-operative cardiac evaluations.
- Work physicals.
- Pain management.
- Medical weight loss.



For more information,
please scan the QR code
or click [here](#)





DIVISION HEAD

Hamid Mirshahidi, MD

ABOUT US

- We are the only academic Hematology/Oncology program in the Inland Empire
- We are part of the multidisciplinary LLU Cancer Center, allowing us to lead in the provision of complete cancer care across all of the cancer disciplines
- We are the only Hematology/Oncology program in the Inland Empire with enough expertise to awarded a coveted ACGME Hematology/Oncology Fellowship
- We have the largest cancer clinical trial portfolio of any institution in the Inland Empire. Our cancer center is designated as a High Performing Site (HPS) by the National Cancer Institute because of significant accrual to NCI cancer trials. Currently, we have over 75 clinical trials offering new treatment options for various types of cancer.
- Our faculty are the leaders of more than 11 subspecialized disease management teams, providing the latest cutting-edge cancer care.

LLUH is the only center or most performing in the Inland Empire for these procedures and services:

- All types of cute leukemia (acute and chronic), including targeted therapy, bone marrow transplant, and CAR T therapy.
- All types of lymphoma, including targeted therapy, bone marrow transplant, and CAR T therapy.
- Multiple myeloma, including targeted therapy, bone marrow transplant, and CAR T therapy.
- Targeted therapies, guided by next-generation sequencing and RNA-sequencing of patients' cancers.
- All types of immunotherapies.
- Radionuclide-based theranostics treatments and molecular imaging.
- Subspecialized care of all gastrointestinal cancers (esophagus, gastric, intestinal, colon, anus).
- Subspecialized care of all kidney cancers.
- Subspecialized care of all prostate cancers.
- Subspecialized care of all bladder cancers.
- Subspecialized care of all head/neck cancers.
- Subspecialized care of all liver cancers.
- Subspecialized care of all biliary cancers (gallbladder, cholangiocarcinoma).
- Subspecialized care of complex melanomas.
- Subspecialized care of complex sarcomas.
- Subspecialized care of all lung cancers.
- Subspecialized care of complex mesotheliomas.
- Subspecialized care of complex breast cancers.
- Subspecialized care of brain and neurological cancers.



**For more information,
please scan the QR code
or click [here](#)**





DIVISION HEAD
Jennifer Veltman, MD

ABOUT US

- The Division of Infectious Diseases at Loma Linda University Health is comprised of a diverse team of experts who treat a wide variety of complicated infections.
- In 2022, the LLUMC Antimicrobial Stewardship Program, which is led by ID faculty, was awarded Silver Status for the California Department of Health Antimicrobial Stewardship Honor Roll.
- The goal of our ASP is to optimize antibiotic use and reduce antimicrobial resistance
- Within our group, we have physicians who specialize in the areas of coccidiomycosis, infections in immunocompromised hosts, epidemiology, antibiotic stewardship, global health, HIV/AIDS, hepatitis C, sexually transmitted diseases, and zoonotic infections.
- Our team leads cutting-edge, NIH-sponsored clinical trials and studies.

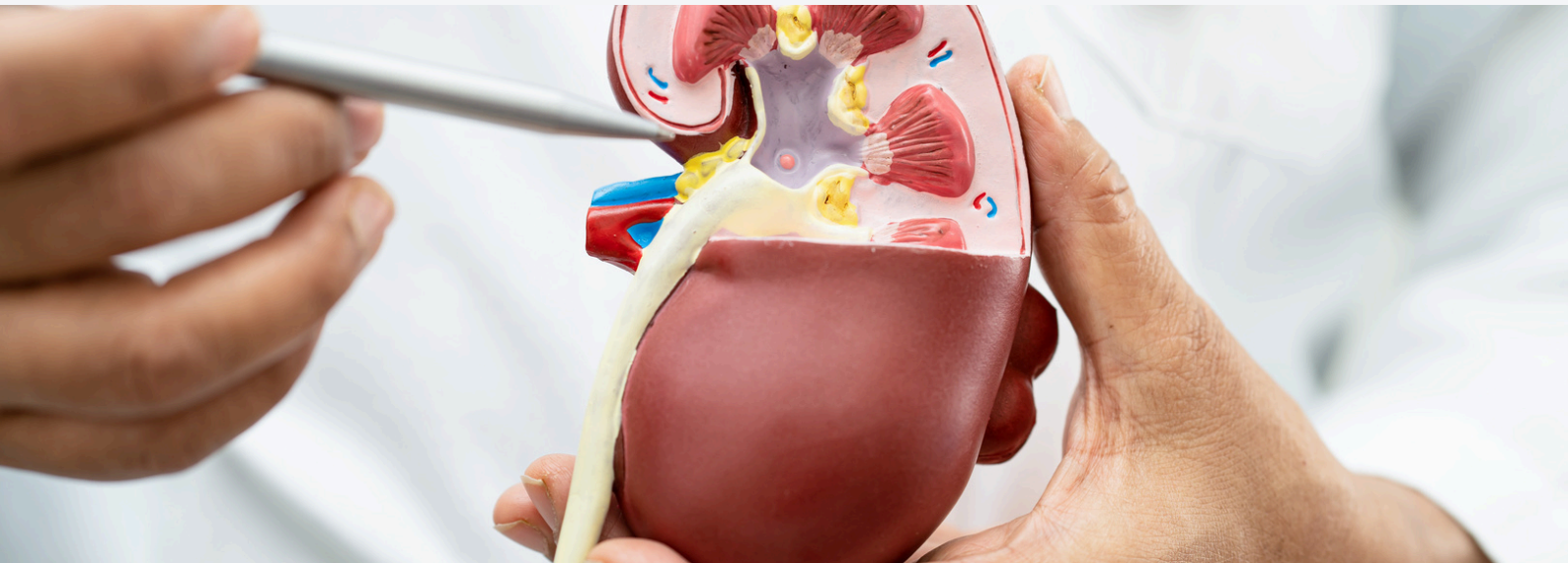
LLUH is the only center or most performing in the Inland Empire for these procedures and services:

- Diagnosis and management of general infectious diseases including bacterial, fungal, and mycobacterial infections.
- Diagnosis and long-term management of complicated Coccidioides infections of the lung, bone, & brain.
- Pre-exposure Prophylaxis (PrEP) treatment for HIV prevention.
- HIV management, including monitoring and treatment of opportunistic infections.
- Diagnosis and management of sexually transmitted infections.
- Solid Organ Transplant pre-evaluations, diagnosis & management of infections in transplant recipients of solid organs and bone marrow.
- Diagnosis and management of complicated cardiac infections including endocarditis, pacemaker & LVAD infections.
- Global Health training program with an emphasis on training residents on diagnosis and management of tropical diseases.



For more information,
please scan the QR code
or click [here](#)





DIVISION HEAD
Amir Abdipour, MD

ABOUT US

- We provide services for patients with kidney disease, including diagnosis and management of kidney diseases and medical management of renal transplantation.
- Our transplant-capable nephrology program is the largest high-volume program of its kind in the region.
- We also offer the region's largest peritoneal dialysis program for patients with kidney failure.

LLUH is the only center or most performing in the Inland Empire for these procedures and services:

- Diagnosis and management of kidney failure in outpatient and in-patient settings.
- Diagnosis and treatment of glomerulonephritis (GN clinic).
- Diagnosis and treatment of autoimmune kidney disease
- Management of resistant hypertension.
- Medical management of kidney stone.
- Providing all modalities of therapeutic apheresis including, plasma exchange, RBC exchange, leukapheresis, photopheresis, LDL-apheresis.
- Dialysis includes hemodialysis, peritoneal dialysis.
- Continue renal replacement therapy (CRRT).
- Management of patients with kidney transplant.
- Kidney biopsy.



For more information,
please scan the QR code
or click [here](#)





DEPARTMENT CHAIR
J. Paul Jacobson, MD

ABOUT US

- Interventional Neuroradiology specializes in providing safe, compassionate, patient-centered care through the integration of clinical and image-based diagnosis and minimally invasive therapy of the head, neck and spine.

LLUH is the only center or most performing in the Inland Empire for these procedures and services:

- Venous manometry and/or stenting for idiopathic intracranial hypertension.
- Carotid artery stenting for symptomatic or severe carotid disease.
- Embolization/flow diversion for cerebral aneurysm.
- Middle meningeal artery embolization for chronic subdural hematoma.
- Pre-operative tumor embolization for meningioma, carotid body tumor, hemangioblastoma, etc.
- Embolization for epistaxis.
- Embolization for AVM, dural AV fistula.
- Inferior petrosal sinus sampling for Cushing's workup.
- Cerebral angiography.
- Vertebroplasty/vertebral augmentation.
- Cervical selective nerve root block.
- Intrathecal nusinersin infusion.



For more information,
please scan the QR code
or click [here](#)





DEPARTMENT CHAIR
Travis Losey, MD

ABOUT US

- LLUH Neurology provides expert, comprehensive, multi-disciplinary diagnostic and treatment services for the full range of neurologic disorders.
- Specialists work together to provide whole-person care in a compassionate setting. Using state-of-the-art technology, specialty-trained experts, and a collaborative approach, we provide you with the most comprehensive neurological care in the region.
- Nationally recognized: In 2024, U.S. News & World Report named us high performing in neurology, and Newsweek recognized us among America's Best Specialized Hospitals for neurological care.

LLUH is the only center or most performing in the Inland Empire for these procedures and services:

- Comprehensive Stroke Center is the first and the only Joint-Commission certified Comprehensive Stroke Center in Inland Empire, we provide 24/7 surgical and medical intervention for the full spectrum of stroke and neurovascular diseases.
- Comprehensive Epilepsy Center is a National Association of Epilepsy Centers recognized Level IV Epilepsy Center. We are the only center in the Inland Empire with the highest level designation for comprehensive epilepsy care.

- Amyotrophic Lateral Sclerosis (ALS) Center – a comprehensive certified treatment center for patients with ALS and related motor neuron diseases. Through the Center for Restorative Neurology, we offer an aggressive proactive treatment approach such that there are hopeful alternatives to all patients at all stages of disease progression. The Center is certified as a comprehensive treatment program by the ALS Association and Golden West Chapter as well as by the Muscular Dystrophy Association. This is the only program of this type within the Inland Empire.
- Center for Restorative Neurology– A unique innovative multidisciplinary program with dedicated (full-time) allied health support and Counseling. We also have a dedicated clinical coordinator to facilitate scheduling and logistics. Very few (< 5) full-time, specialized multidisciplinary programs like this exist nationwide.
- Muscular Dystrophy Clinic. Certified by the national Muscular Dystrophy Association we maintain a robust, multidisciplinary clinic focused on the diagnosis and treatment of the full spectrum of neuromuscular diagnoses; both inherited and acquired.
- Parkinson's Disease Center. We are the only academic Parkinson's Disease program in the Inland Empire.
- Neuro-Oncology. We have the only neuro-oncologist in the Inland Empire and collaborative clinics with neurosurgery and radiation oncology.
- Headache Program: We have the only fellowship-trained United Council for Neurological Subspecialties (UCNS) certified Headache specialists in the Inland Empire.
- Clinical Research Center. The only academic neurology research program in the inland empire. Offers participation in therapeutic clinical trials in neuromuscular disease, movement disorders, epilepsy and multiple sclerosis.
- Neurology interventional pain: The only interventional pain program within a neurology department in the Inland Empire. The unique skills of a neurologist applied to the diagnosis and treatment of pain including the full range of interventional procedures.



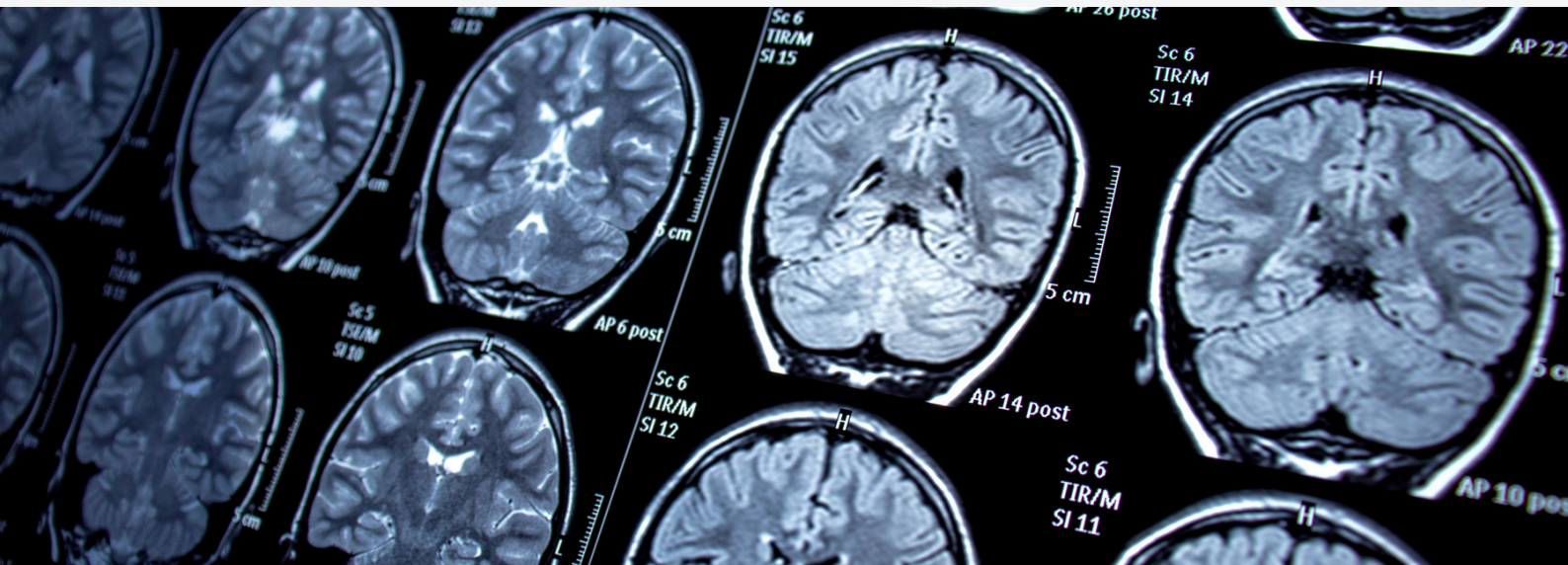
**For more information,
please scan the QR code
or click [here](#)**



NEUROSURGERY - BRAIN TUMOR PROGRAM



LOMA LINDA UNIVERSITY
HEALTH



DEPARTMENT CHAIR

Warren Wilson Boling, Jr., MD

ABOUT US

- LLUH Neurosurgery provides comprehensive, multi-disciplinary diagnostic and treatment services for Central Nervous System tumors and cancers. We utilize precision based medicine as the standard of care, to provide patient-centric treatment options.
 - Our experts, including a dedicated medical neuro-oncologist, are at the forefront of Neurosurgical Oncology including clinical, research and global academic endeavors. All patients benefit with our future-centric and strong mission-based approach.
- LLUH is the only center or most performing in the Inland Empire for these procedures and services:**
- The disease pathologies treated, include but are not limited to:
 - Primary brain tumors - (such as meningiomas, schwannomas, gliomas).
 - Secondary brain tumors - metastases.
 - Complex skull base tumors - meningiomas, chordomas, pituitary tumors, craniopharyngiomas.
 - Spinal tumors – primary and secondary.
 - Our facilities have the following state of the art surgical abilities:
 - Extended, complex endoscopic transsphenoidal approaches.
 - Minimally invasive surgical approaches for tumors.
 - Hybrid open and endoscopic approaches for skull base tumors.
 - Exoscopic and microscopic approaches for brain and spinal tumors.
 - Real time intraoperative ultrasound.
 - Real-time intraoperative neuromonitoring, computer guided neuro-navigation.
 - Real time intra-operative fluorescence guided tumor surgeries.
 - Awake brain mapping and tumor surgeries.
 - Genomic profiling, molecular marker-based precision medicine.
 - Laser ablative surgeries and laser interstitial thermal therapy (LITT).
 - Stereotactic radiosurgery (SRS) and proton beam therapy.



**For more information,
please scan the QR code
or click [here](#)**



LOMA LINDA UNIVERSITY
FACULTY MEDICAL GROUP

NEUROSURGERY - CEREBROVASCULAR & ENDOVASCULAR SURGERY



DEPARTMENT CHAIR

Warren Wilson Boling, Jr., MD

ABOUT US

- LLUH Neurosurgery provides comprehensive diagnostic and treatment services for conditions requiring treatment with advanced neurovascular methodology. We utilize curated technology that is constantly evolving, to provide the best possible options for our patients.
- Our sub-specialists are industry leaders and teachers of current techniques and approaches that optimize outcomes.
- We support LLUH's Comprehensive Stroke Certification issued by the Joint Commission
- Access to services are available at various locations in the Inland Empire.

LLUH is the only center or most performing in the Inland Empire for these procedures and services:

- Neuro interventional endovascular procedures.
- Open and endovascular treatment approaches for complex neurovascular conditions.
- Aneurysm coiling.
- Aneurysm clipping.
- Endovascular flow diversion, intrasaccular flow disruption treatment for brain aneurysms.
- Endovascular venous stenting for Intracranial idiopathic hypertension.

- Carotid endarterectomy and stenting.
- Cerebrovascular bypass and revascularization.
- Intra-arterial chemotherapy for retinoblastoma.
- Venous manometry.
- Cerebral angiography.
- Microsurgical treatment of Moya Moya disease.
- Parafascicular and key hole approaches for cerebral hematomas.
- Multidisciplinary approach to subarachnoid hemorrhage.
- Intracranial hemorrhage.
- Arterio-venous malformation (AVM).
- Cavernoma.
- Stroke.
- Spinal vascular lesions.
- Dural vascular lesions.
 - Presurgical embolization of tumor or AVM.
 - Middle meningeal artery embolization for chronic subdural hematoma.
 - Microvascular decompression of cranial nerves.
 - Inferior petrosal sinus sampling for Cushing's disease work up.
 - Intracarotid amobarbital test.



**For more information,
please scan the QR code
or click [here](#)**





DEPARTMENT CHAIR

Warren Wilson Boling, Jr., MD

ABOUT US

- LLUH Neurosurgery provides comprehensive diagnostic and treatment services for conditions requiring treatment with cranial surgery. We utilize curated technology that is constantly evolving, to provide the best possible options for our patients.
- Our sub-specialists are industry leaders and teachers of current techniques and approaches that optimize outcomes.
- We maintain and support a Level 4 (the highest designation) Epilepsy Center, Joint Commission certification as a Comprehensive Stroke Center, and a Level 1 Trauma Center.

LLUH is the only center or most performing in the Inland Empire for these procedures and services:

- Epilepsy.
- Movement disorders.
- Traumatic brain injury.
- Chiari malformation.
- Brain tumor.
- Idiopathic intracranial hypertension.
- Normal pressure hydrocephalus (NPH).
- Trigeminal neuralgia.
- Hemifacial spasm.
- Arachnoid and colloid cysts.
- Complex skull base approaches.
- Responsive neurostimulation (RNS).
- Deep brain stimulation (DBS).
- Cranioplasty.
- Microvascular decompression.
- Robotically assisted brain surgery.
- Minimally invasive techniques (MIS).
- Laser ablation surgery.
- Transsphenoidal endoscopic pituitary approach.



For more information,
please scan the QR code
or click [here](#)





DEPARTMENT CHAIR

Warren Wilson Boling Jr., MD

ABOUT US

- LLUH Neurosurgery offers a full spectrum of surgical intervention for the treatment of spine and nerve disease.
- Our Spine specialists are recognized nationally, and by maintaining currency with advances in spine and nerve surgery, can provide the best options available to our patients including participation in clinical trials.
- The Neurosurgery department prioritizes access for acute needs, and has entry points that include in-person and virtual visits in all areas of the Inland Empire.

LLUH is the only center or most performing in the Inland Empire for these procedures and services:

- Artificial cervical and lumbar spine disc.
- Brachial plexus correction.
- Computer and image guided spinal navigation.
- Degenerative spine repair.
- Discectomy.
- Dorsal Root Ganglion stimulation for pain.
- Endoscopic carpal tunnel release.
- Endoscopic spine surgery.

- Foraminectomy/foraminotomy.
- Interbody fusion: XLIF, ALIF, TLIF, OLIF.
- Intraoperative Neuro Monitoring (IOM).
- Kyphoplasty.
- Laminectomy.
- Motion preservation surgery.
- Multidisciplinary approach to spine pain.
- Non-fusion alternatives.
- Percutaneous placement of instrumentation.
- Peripheral nerve surgery.
- Sacro-iliac fusion.
- Spinal cord stimulation.
- Spinal deformity correction.
- Spinal oncology surgery.
- Spine trauma.
- Tethered cord release.



**For more information,
please scan the QR code
or click [here](#)**





DEPARTMENT CHAIR
Kevin Balli, MD

ABOUT US

- From menstruation through menopause, we offer women the latest, most revolutionary gynecological treatments.
- Our team of caring physicians and nurse practitioners are experts in management of all gynecologic problems, including contraception, abnormal bleeding, pelvic pain and endometriosis, menopausal treatments, and health maintenance and screening.
- We offer minimally invasive techniques for managing many GYN concerns, including office-based procedures for heavy bleeding.
- Our surgeons are experts in minimally invasive and robotic surgery for endometriosis. Many patients are transferred to us for complex cases from other practices who lack the expertise or resources to manage this condition appropriately and safely. If you need surgery, get it done right, the first time.
- Full range of urogynecology services, including traditional and minimally invasive procedures.
- Complete in-office testing suite for bladder and bowel concerns.

LLUH is the only center or most performing in the Inland Empire for these procedures and services:

- Special expertise in metabolic health in gynecologic disease.
- Certified in menopausal medicine.
- Robotic and minimally invasive surgery for severe, deep infiltrating endometriosis.
- Robotic treatment of pelvic surgery complications
 - Mesh complications.
 - Iatrogenic obliterated vagina.
 - Ureterovaginal fistula.
- McIndoe and other neovaginal procedures.
- Treatment of complications in transgender women.



**For more information,
please scan the QR code
or click [here](#)**





DIRECTOR OF MFM SERVICES
Ruofan Yao, MD

ABOUT US

- Customized care for mothers-to-be throughout their pregnancy in a family-focused environment.
- Pregnancy should be a wonderful experience! With the reassurance and guidance of our clinicians, we promote healthy outcomes without over-medicalization whenever possible.
- When needed, our general obstetricians and maternal-fetal medicine specialists work together seamlessly to manage the most complex conditions in pregnancy care.
- Our care extends to pregnant patients who need hospitalization due to complications. Our patient-centered and team-based approach shares the expertise of obstetricians, MFM specialists, and our unmatched experience in neonatal medicine to achieve the best outcomes.
- In fact, we are the regional referral center for complicated pregnancies throughout the Inland Empire and beyond.

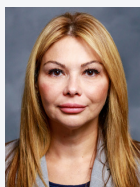
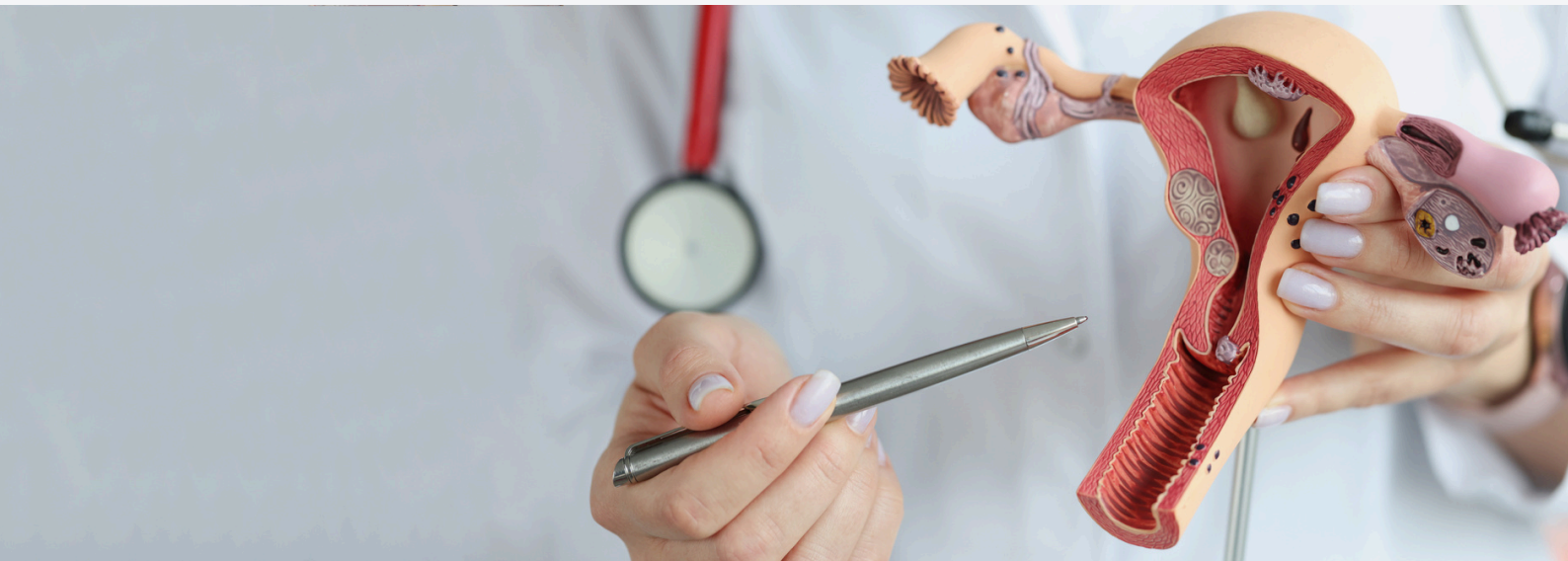
LLUH is the only center or most performing in the Inland Empire for these procedures and services:

- Comprehensive high risk **maternal** management, including antepartum, intrapartum and postpartum management.
- Comprehensive **fetal** evaluation and multidisciplinary management of fetal anomalies, including antenatal, intrapartum and postnatal management.
- State of the art **sonographic** technology to evaluation fetal anatomy.
- Specialty clinic for **diabetes** management including management of insulin pump in pregnancy.
- Center for Obstetrical Management of Placenta Accreta Spectrum (COMPAS) - multidisciplinary management of **placenta accreta spectrum disorder**.
- Comprehensive **genetics** program including prenatal diagnosis via CVS and amniocentesis, postnatal evaluation, carrier screening and counseling.
- Clinical **research** to gather data on the best practice in obstetrical care.



For more information,
please scan the QR code
or click [here](#)





DIVISION HEAD
Yevgeniya Ioffe, MD

ABOUT US

- Comprehensive care of gynecologic malignancies all conducted at a single site comprehensive cancer center.
- Services include diagnostic, surgical, and chemotherapy / immunotherapy / biologic therapy and radiation under the supervision of board certified gynecologic oncology physicians.
- Expertise in management includes treatment plans reviewed at multi-specialty tumor boards, incorporating the latest research in multiple fields.

LLUH is the only center or most performing in the Inland Empire for these procedures and services:

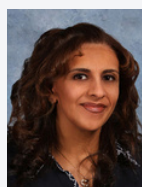
- Genetic testing and referral for counseling, where appropriate.
- Hyperthermic (or Heated) Intraperitoneal Chemotherapy (HIPEC) therapy during interval debulking surgeries for ovarian cancer.
- Multi-specialty surgical approach, if needed, in conjunction with Surgical Oncology physicians.
- Fertility sparing procedures and medical management for cervical, uterine, and endometrial cancers.
- Surgical management of placenta accreta spectrum disorders, in conjunction with High Risk Obstetrical team.
- Select clinical trials and research studies.



For more information,
please scan the QR code
or click [here](#)



OBSTETRICS & GYNECOLOGY - REPRODUCTIVE ENDOCRINOLOGY & INFERTILITY



DIVISION HEAD
Gihan Bareh, MD

ABOUT US

- 5-star, top-rated center and physician on Yelp & Google.
- More than 30 years of success in treating infertility and providing reproductive services.
- Read success stories at LomaLindaFertility.com/success-stories.
- Check out our IVF success rates at LomaLindaFertility.com/rates.
- Dedicated doctors. University-level care. Close to home. Providing exceptional, yet approachable, infertility treatment for communities in Riverside, San Bernardino and southeast California.
- Get the care you need, no matter how difficult your case: Top referral fertility center in southern California for complex infertility cases.
- Fully accredited IVF lab, and the go-to lab for other fertility clinics and area doctors.
- Located in Loma Linda, the only U.S. Blue Zone (where people live longer & healthier lives): Our center applies Blue Zone ideas, treating infertility beyond just the physical.
- Easy and immediate consultation within the comprehensive LLUH network, including continuity of care for pregnancy, delivery and beyond, all at the same location.
- LLU Medical Center (LLUMC) gynecology REI-parent division named among the top 30 divisions in the country by U.S. News & World Report.
- Learn about infertility, how to get pregnant and reproductive health:
 - Health info: LomaLindaFertility.com/infertility.
 - Fertility blog: LomaLindaFertility.com/blog.
 - Find us on Facebook & Twitter.

LLUH is the only center or most performing in the Inland Empire for these procedures and services:

- Full suite of fertility services on-site – including:
- IVF, egg retrievals, embryo transfers, ICSI and PGT (preimplantation genetic testing).
- Infertility testing.
- Basic treatments, including ovulation induction, IUI (intrauterine insemination) and guidance on lifestyle changes.
- Reproductive surgery.
- Egg, sperm and embryo donation – including in-house egg donor program.
- Gestational carrier surrogacy.
- Fertility preservation, including for social reasons and cancer and a recognized leader in ovarian tissue cryopreservation.
- Treatment for female and male infertility, unexplained infertility and weight-related concerns in women.
- Holistic approach to fertility treatment, whether IVF or a less aggressive treatment coupled with lifestyle changes.
- Affordable IVF and discounts; all patients welcome, including privately insured or managed care.



For more information,
please scan the QR code
or click [here](#)





DIVISION HEAD

Akbar Sharip, MD, MPH

ABOUT US

- The Occupational Medicine Center is a high-volume clinic within Loma Linda University Health, serving thousands of employers across the Inland Empire.
- We offer comprehensive occupational medicine services, specializing in the diagnosis, treatment, and management of work-related injuries and health issues.
- Our board-certified physicians are experts in Occupational and Environmental Medicine (OEM) and injury care.
- We are committed to delivering compassionate, whole-person care, recognizing the profound impact of injury on employees.
- In collaboration with the LLU Workers' Compensation Center, we partner with numerous specialty clinics within the Loma Linda Health system, ensuring integrated and multidisciplinary care for employees.
- Employers choose our clinic because of our:
 - Extensive expertise in OEM and injury care
 - Convenient location within the Inland Empire
 - Proven track record of successful outcomes
- Our strong partnerships with employers allow us to deliver customized solutions that promote:
 - Employee health and safety
 - A rapid and safe return to work
 - Minimization of disruptions to business operations
- By selecting our clinic, employers invest in the well-being of their workforce and the overall success of their business.

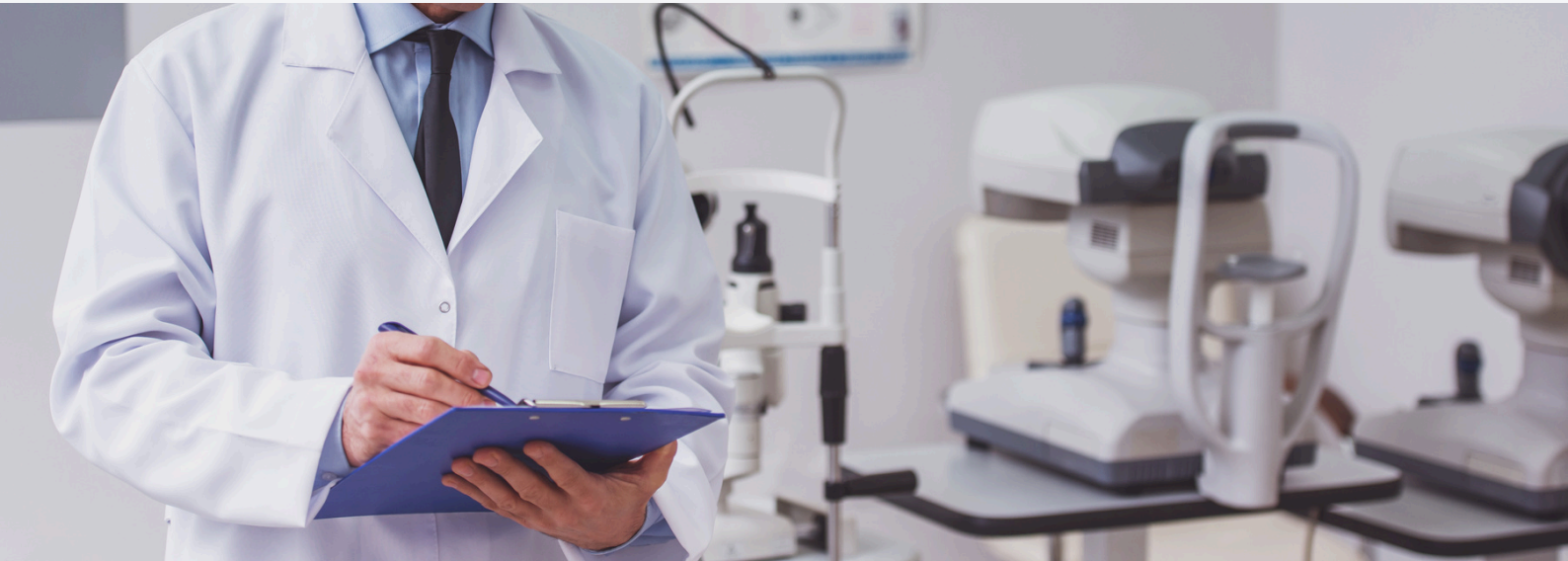
LLUH is the only center or most performing in the Inland Empire for these procedures and services:

- We provide full-service Occupational and Environmental Medicine (OEM) services, including:
 - **Work-Related Injury Care & Disability Management:** Diagnosis, treatment, and management of work-related injuries, including musculoskeletal injuries, trauma, and return-to-work coordination.
 - **Health Surveillance Programs:** Routine screenings (hearing tests, pulmonary function testing, vision exams, respiratory fit testing) to monitor and address workplace health risks.
 - **Fitness-for-Duty & Return-to-Work Examinations:** Assessing individuals to ensure they can safely perform their job duties post-injury or illness, including law enforcement/police exams and DOT exams.
 - **Preplacement & Post-Officer Examinations:** Comprehensive evaluations to ensure employees meet job-specific health requirements.
 - **Ergonomic & Workplace Hazard Assessments:** Identifying, analyzing, and improving workstation ergonomics, while mitigating risks related to physical, chemical, biological, and ergonomic factors.
 - **Vaccinations & Immunizations:** Providing vaccinations (Hepatitis, Tetanus, Flu) to protect against infectious diseases in high-risk workplaces.
 - **Environmental Exposure Assessments:** Evaluating the impact of hazardous substances in the workplace.
 - **Drug & Alcohol Testing & MRO Services:** Ensuring compliance with workplace substance use policies and accuracy in testing processes.
 - **Independent Medical Evaluations (IME/QME):** Expert evaluations to resolve disputes over work-related injuries and return-to-work issues.
 - **Workers' Compensation Management:** Coordinating treatment and communication with employers for a smooth recovery and return-to-work process.
 - **Preventive Health & Wellness Programs:** Promoting employee health and preventing occupational illnesses through targeted health programs.
- **Additional Services:** Telemedicine, on-site radiology, and limited pharmacy services are available.



For more information,
please scan the QR code
or click [here](#)





DEPARTMENT CHAIR
Michael Rauser, MD

ABOUT US

- We are the leading provider of eye care in the Inland Empire. The goal of our department is to excel in the areas of patient care, physician education, and clinical research in ophthalmology.
- At the Loma Linda University Eye Institute, cutting-edge technology and innovative surgical techniques are used to serve our patients within a Christian environment.

LLUH is the only center or most performing in the Inland Empire for these procedures and services:

- Keratoprosthesis (artificial cornea).
- Iris Prosthesis (artificial iris).
- Descemet's membrane endothelial keratoplasty.
- Descemet's stripping without endothelial keratoplasty.
- Corneal cross-linking.
- Anterior segment reconstruction.
- Laser refractive surgery.
- Neurotrophic keratitis clinical trials.
- Offers the only full-time oculoplastic surgeon available for the region.
- Advanced Glaucoma Care
 - Micropulse CPC.
 - Xen gel stent.
 - Durysta.

- High-acuity/emergency glaucoma treatments unable to be managed in outpatient clinical settings due to logistics or patient factors.
- Peds Ophthalmology
 - Pediatric cataract surgery, especially for infants.
 - ROP, affiliation with NICU with the small baby unit. We are the only ones who can see the small babies.
 - Vision screening program.
 - Pediatric subspecialty access for all specialties (Retina, Neuro, glaucoma, cornea, uveitis, plastics, optometry/specialty contacts).
 - Adult Strabismus- also treat adults with strabismus because of their expertise in correcting eye misalignment.
- Retina
 - Proton therapy for ocular malignancies.
 - Submacular surgery.
 - Complex Retinal detachment repair.
 - Photodynamic therapy.
 - Amniotic graft for macular hole.
 - Autotransplant for macular hole.
 - Implantation of a long-term device for macular degeneration.
 - Suturing of intraocular lenses.
 - Management of complex ocular trauma after blunt or gunshot injuries.
 - Surgical management of advanced diabetic retinopathy.



**For more information,
please scan the QR code
or click [here](#)**





DEPARTMENT CHAIR
Thomas Donaldson, MD

ABOUT US

- Our orthopaedic providers offer a range of treatments to get patients back to living a healthy, active life.
- From hand surgery to trauma cases, spine care to joint replacement, and tumor removal, our team is committed to finding the best treatment path for all of our patients.

LLUH is the only center or most performing in the Inland Empire for these procedures and services:

- Limb Lengthening - Innovative treatments for leg length discrepancy, mal-unions, non-unions, complex fractures, joint contractures, bone deficits, hip disorders, and short stature. One of the only medical centers offering this service in the region.
 - Congenital limb defect.
 - Fibrous dysplasia.
 - Congenital femoral deficiency
- Joint replacement surgery and revision surgery is available for any joint, including:
 - Hip, knee, and ankle.
 - Shoulder, elbow, and wrist.
 - Disks in the spine.
 - Finger and toe knuckles.

- Sports Medicine
 - Arthritis.
 - Meniscal, ligament & cartilage injuries.
 - Rotator cuffs, tendonitis, dislocations, and impingements.
- Orthopaedic Spine Care
 - Back pain originating from the cervical (neck), thoracic (upper and middle back), and lumbar (lower back) spine.
 - Herniated disk/sciatica.
- Hand, Wrist & Arm Care
 - Carpal tunnel syndrome.
 - Tennis elbow (lateral epicondylitis).
 - Ganglion cysts.
- Fracture & Trauma
 - Pelvic trauma.
 - Nonunions.
 - Malunions.
 - Osteomyelitis.
 - Limb salvage.
- Orthopaedic Oncology - tumor treatment
 - Related conditions and treatments: bone cancers, Ewing sarcoma, enchondroma, osteosarcoma, chondroblastoma.
- Specialized physical therapy.
- Orthopaedic imaging (EOS Imaging System).



**For more information,
please scan the QR code
or click [here](#)**





DEPARTMENT CHAIR
Alfred Simental, MD

ABOUT US

- Loma Linda University Ear, Nose, and Throat Surgery provide diagnosis and comprehensive treatments for conditions affecting the patients' ear, nose, throat, head, and neck. Using state-of-the-art technologies, our surgeons are committed to quality, whole-patient care focused on the healing of body, mind, and spirit.
- Our specialists are fellowship-trained in the entire spectrum of otolaryngology, head & neck surgery, and facial plastic surgery. We provide tertiary-level care for the most complex and difficult problems within otolaryngology using advanced, state-of-the-art procedures and treatments.

LLUH is the only center or most performing in the Inland Empire for these procedures and services:

- Adult and pediatric airway surgery.
- Advanced head neck oncologic and microvascular surgery.
- Advanced thyroid and parathyroid surgery.
- Advanced voice and phonosurgery.
- Airway surgery.
- Cochlear implantation.
- Congenital pediatric otolaryngology.
- Endoscopic ear surgery.
- Eustachian tube balloonplasty.
- Facial paralysis rehabilitation surgery.
- Facial reanimation.
- Lateral skull base surgery.
- Microvascular reconstruction.
- Minimally invasive anterior skull base surgery.
- Multidisciplinary head and neck cancer treatment.
- Pediatric otoplasty and congenital ear deformity.
- Sialendoscopy.
- Transoral robotic surgery.
- Transoral robotic surgery.
- Voice rehabilitation and voice surgery.



**For more information,
please scan the QR code
or click [here](#)**



PHYSICAL MEDICINE & REHABILITATION - PAIN MEDICINE



DEPARTMENT CHAIR
Justin Hata, MD

ABOUT US

- For over two decades, our Physical Medicine & Rehabilitation (PM&R) physicians have been providing care for physical, social, and emotional needs after injury or disease.
- Our interdisciplinary team may include professionals such as neurologists, orthopedic surgeons, neurosurgeons, urologists, and non-physician health care professionals such as neuropsychologists, physical therapists, speech therapists, and social workers.

LLUH is the only center or most performing in the Inland Empire for these procedures and services:

- Comprehensive, multidisciplinary spine and pain management.
- Neuromodulation, spinal cord stimulation for chronic pain conditions.
- Robotic/technology-assisted neurorehabilitation.



For more information,
please scan the QR code
or click [here](#)



PHYSICAL MEDICINE & REHABILITATION - NEUROPSYCHOLOGY



DIRECTOR
Travis Fogel, PhD

ABOUT US

- For over two decades, our Physical Medicine & Rehabilitation (PM&R) physicians have been providing care for physical, social, and emotional needs after injury or disease.
- Our interdisciplinary team may include professionals such as neurologists, orthopedic surgeons, neurosurgeons, urologists, and non-physician health care professionals such as neuropsychologists, physical therapists, speech therapists, and social workers.
- We are the only board-certified rehabilitation psychologist in the Inland Empire.

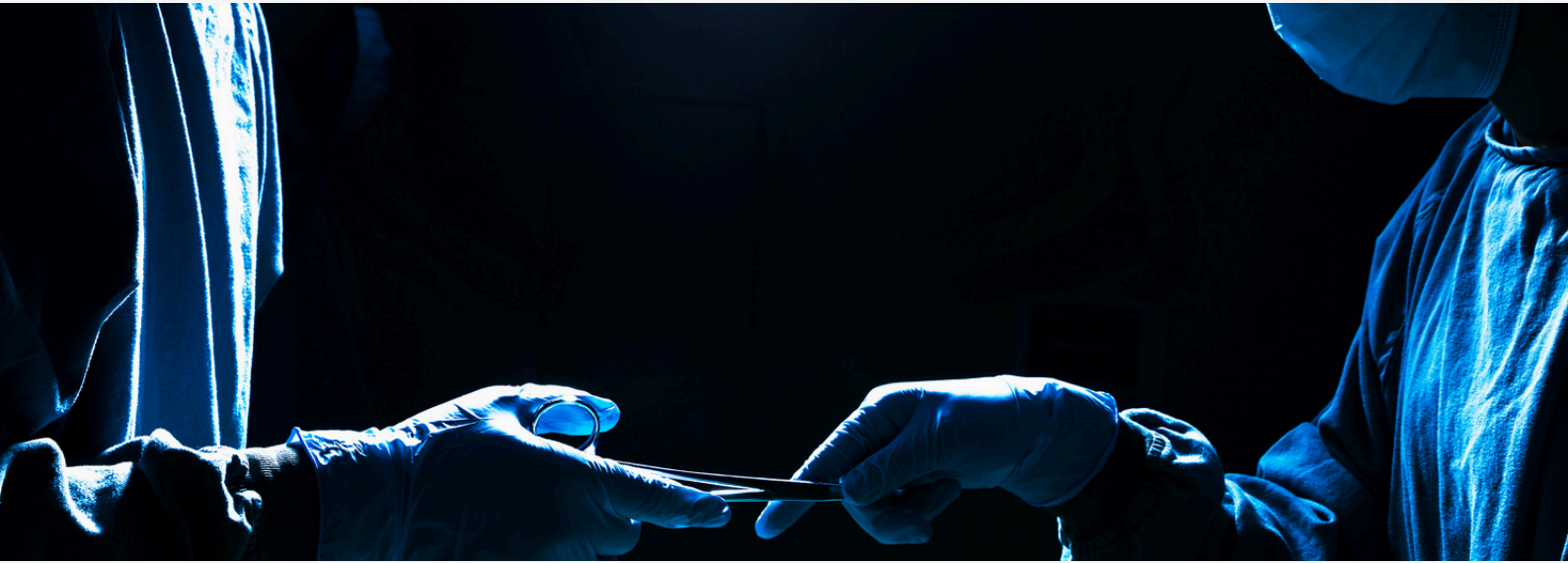
LLUH is the only center or most performing in the Inland Empire for these procedures and services:

- Neuropsychological assessment.
- Independent medical evaluation (IME).
- Medico-legal evaluation.
- Fitness for duty evaluation.
- Rehabilitation psychology services for the treatment of neurologic conditions and chronic pain.
- Biofeedback for the treatment of pain.
- Computer-based exercises for the treatment of cognitive impairment.
- EMDR (Eye Movement Desensitization and Reprocessing).



For more information,
please scan the QR code
or click [here](#)





DEPARTMENT CHAIR

Subhas Gupta, MD, PhD, FRCSC, FACS

ABOUT US

- The Department of Plastic Surgery is dedicated to providing excellence in healthcare, education, and research.
- We offer state-of-the-art, comprehensive, and quality aesthetic and reconstructive surgery in a whole patient care environment.
- Patients who undergo reconstructive surgery not only regain their physical selves but renew their spirits and peace of mind.
- Our expert plastic surgeons provide world-class comprehensive care for the aesthetic and reconstructive patients of the Inland Empire.
- Our fellowship-trained plastic surgeons have performed numerous pioneering procedures in plastic surgery. We are national leaders and innovators in cosmetic surgery, breast reconstruction, skin substitutes, wound healing, complex microsurgery, and facial trauma. We frequently treat patients from all over the US and around the world. Our broad base of clinical and research expertise helps us operate on the most complex problems while achieving outstanding results.

LLUH is the only center or most performing in the Inland Empire for these procedures and services:

- Aesthetic surgery of the face.
- Breast reconstruction.
- Craniofacial surgery.
- Complex microsurgery.
- Complex skin cancer reconstruction.
- Facelift
- Liposuction.
- The plastic surgeons of Loma Linda University have a number of centers of clinical care excellence:
 - Aesthetic surgery of the face, breast and body.
 - Breast reconstruction.
 - Cleft lip and palate reconstruction.
 - Craniofacial surgery for congenital deformities.
 - Post bariatric body contouring.
 - Laser surgery and scar revision.
 - Maxillofacial trauma.
 - Skin cancer reconstruction.
 - Hand surgery and microsurgery.



For more information,
please scan the QR code
or click [here](#)





DEPARTMENT CHAIR

Karen Studer, MD, MPH, MBA, FACPM

ABOUT US

- The Center for Health Promotion's Preventive Medicine Clinic is dedicated to the prevention, treatment, and reversal of chronic disease.
- We utilize comprehensive lifestyle assessment, detailed history, wellness examinations, and evidence-based diagnostic testing to proactively address risk factors for chronic disease development and progression.
- Our Preventive and Lifestyle Medicine experts specialize in partnering with patients to create individual treatments plans to meet the patient's needs and promote optimal health.

LLUH is the only center or most performing in the Inland Empire for these procedures and services:

- LLUH is a national leader in Preventive and Lifestyle Medicine offering several unique services:
 - The region's only inpatient lifestyle medicine service for intensive lifestyle treatment when patients need it most.
 - Inpatient addiction medicine services.
 - Center for Health Promotion's unique programs:
 - Executive Health services.
 - Health 180 – Intensive Therapeutic Lifestyle Change program for chronic disease remission and reversal.
 - International Travel Clinic to meet all travel-associated needs (malaria prevention, travel vaccines and medications, and counseling).



For more information,
please scan the QR code
or click [here](#)



PULMONARY, CRITICAL CARE, HYPERBARIC, SLEEP MEDICINE



DIVISION HEAD

H. Bryant Nguyen, MD

ABOUT US

- Loma Linda University Medical Center was ranked #41 in the nation in pulmonology and lung surgery for 2023-24 by U.S. News & World Report.
- Our pulmonologists see patients who have issues related to their lungs and respiratory system.
- Our team leads the region in both innovative research and patient care. Translating findings from clinical trials into new, effective treatments helps us achieve our goal to improve patient lives. We also offer the highest number of innovative procedures in the region in pursuit of this goal.
- Our program is the only advanced lung disease center in the region with specific clinics for allergy and immunology, interstitial lung disease, interventional pulmonary procedures, pulmonary hypertension, critical illness recovery, sleep medicine, and obstructive airway disease (severe asthma and COPD).

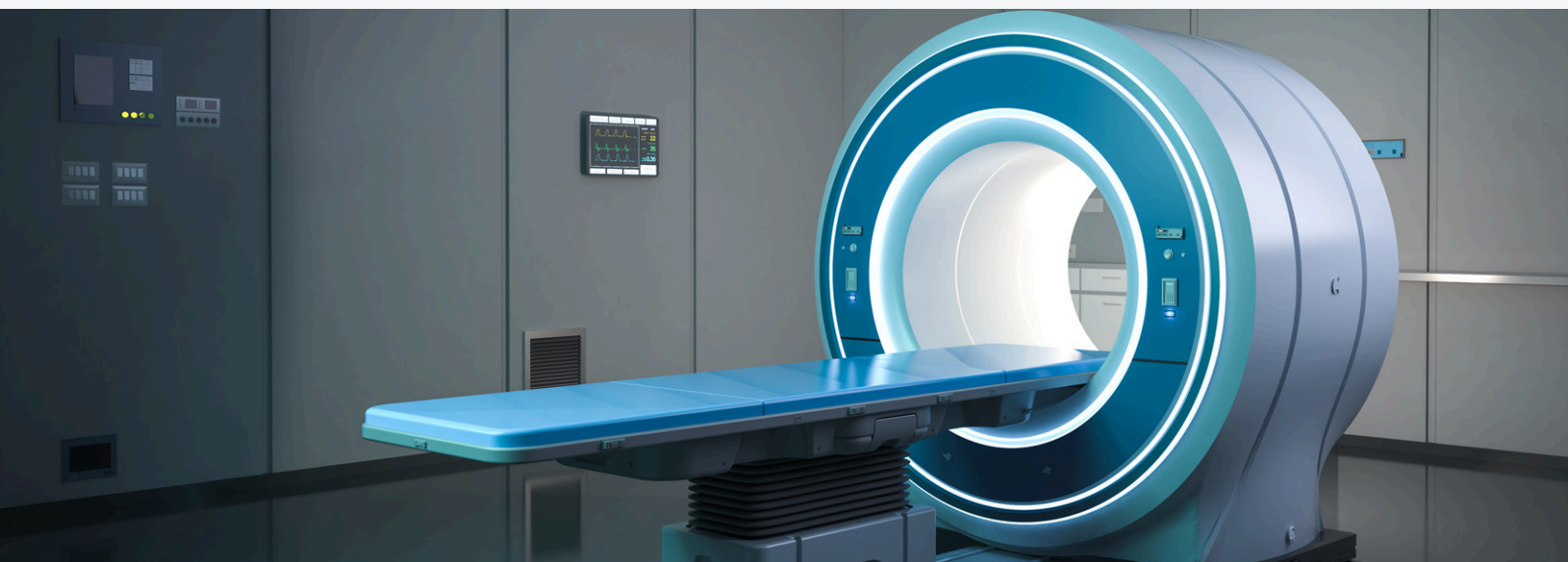
LLUH is the only center or most performing in the Inland Empire for these procedures and services:

- An accredited pulmonary hypertension program.
- A center of excellence for pulmonary fibrosis management.
- An accredited comprehensive hyperbaric medicine center.
- Advanced asthma care with extensive experience in treating severe refractory asthmatics with advanced biologic medications.
- Multidisciplinary allergy and pulmonology care for asthmatics.
- Bronchial thermoplasty for severe asthmatics.
- Advanced pulmonary hypertension medications.
- Home intravenous and subcutaneous therapy for pulmonary hypertension.
- Pulmonary Embolism Response Team.
- Critical Illness Recovery Clinic for patients with post-intensive care syndrome or post-COVID syndrome.
- Full-service multidisciplinary sleep clinic (intersection with pulmonary medicine, family medicine, psychiatry, and pediatrics).
- Cognitive behavioral therapy for insomnia.
- Phrenic nerve stimulator evaluation and management.
- Dedicated interstitial lung disease (ILD) clinic.
- Hyperbaric medicine clinic.
- Interventional pulmonary service performing specialized procedures to diagnose and treat complex lung conditions.
- Robotic bronchoscopy by interventional pulmonology.



For more information,
please scan the QR code
or click [here](#)





DEPARTMENT CHAIR
Jerry Slater, MD

ABOUT US

- Loma Linda University Health Department of Radiation Medicine offers a wide range of radiation treatment options for the cancer patient.
- We are an academic Radiation Oncology program that utilizes multidisciplinary clinics and tumor boards with Medical Oncology and all Surgical Oncology specialists in creating and delivering the best option for the individual patient.
- Have the most complete radiation therapy options including:
 - Proton therapy
 - IMRT and 3D photon therapy
 - Low dose rate and high dose rate brachytherapy
 - Electron therapy
 - Stereotactic Radiosurgery (SRS)
 - Stereotactic Body Radiation Therapy (SBRT)
 - Total Body Irradiation (TBI)
 - Combined radiation and chemotherapy
- American College of Radiology certified treatment center.
- Multiple treatment locations including:
 - Loma Linda University Medical Center
 - Loma Linda University Medical Center, Murrieta
 - Highland Springs Medical Office, Beaumont
- Physicians are sub-specialized in cancer management and teams.

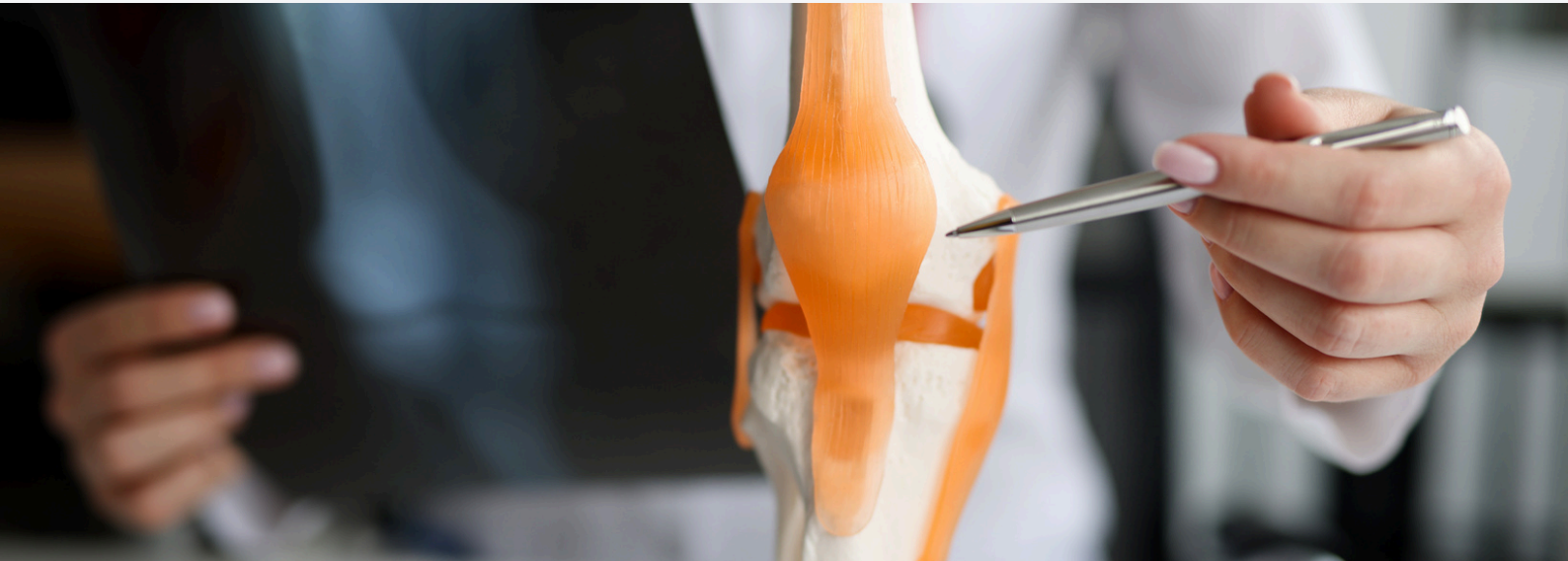
LLUH is the only center or most performing in the Inland Empire for these procedures and services:

- Proton therapy: James M. Slater, MD Proton Treatment and Research Center, the first hospital-based proton therapy center in the world, with the most experience in California and western United States. Treats cancer with reduced radiation to normal tissue than conventional radiation.
- Proton stereotactic radiosurgery (SRS): One of only 2 proton radiosurgeries sites in the United States, the other being Massachusetts General Hospital-Harvard School of Medicine
- Pediatric cancer treatment utilizing protons. Delivers significantly less radiation to children with cancer than other forms of radiation.
- Proton stereotactic body radiation (SBRT).



For more information,
please scan the QR code
or click here





DIVISION HEAD

Christina Downey, MD

ABOUT US

- Loma Linda University Health's rheumatology physicians specialize in evaluating, diagnosing, and managing a wide array of musculoskeletal conditions and connective tissue diseases with multi-systemic issues.
- Rheumatologists manage life and organ threatening diseases which are driven by the immune system and affect the entire body, such as systemic lupus, vasculitis, inflammatory myositis, and scleroderma. While there are not cures for these conditions, they can be managed with medications. Other rheumatologists in the Inland Empire often refer patients to Loma Linda rheumatology for specialized and advanced treatments for these conditions.
- Loma Linda rheumatology specializes in early diagnosis with ultrasound and treatment of early inflammatory arthritis like rheumatoid arthritis to stop progression and prevent disability and downstream consequences of untreated disease.
- The Rheumatology Division runs a Fracture Liaison Service to ensure timely treatment of patients with osteoporosis who have had a fracture.
- Our department houses its own infusion center, so patients receiving therapy can be supervised by their own physicians.

LLUH is the only center or most performing in the Inland Empire for these procedures and services:

- Point-of-care musculoskeletal, vascular, and parotid ultrasound.
- Center of Excellence for Lupus.*
- Center of Excellence for Osteoporosis.*
- Center of Excellence for Scleroderma.*
- Center of Excellence for Myositis.*
- Center of Excellence for Vasculitis.*
- Center of Excellence for Early Inflammatory Arthritis.*

*Designated by Loma Linda University Health



For more information,
please scan the QR code
or click [here](#)





DIVISION HEAD

Kaushik Mukherjee, MD

ABOUT US

- As a Level 1 Trauma Center, we provide the highest level of surgical care for traumatic injuries.
- Our services include emergency care, orthopedic care, cardiothoracic care, and neurosurgery 24 hours a day.
- We have separate emergency departments for adults and kids, with four adult trauma bays and two pediatric trauma bays.
- Our department features providers from different specialties who work together as a team to give patients the best possible experience.
- After providing care in the hospital, we connect our patients and families to helpful resources for support after discharge.

LLUH is the only center or most performing in the Inland Empire for these procedures and services:

- Treated 3,000 patients in the adult trauma registry last year (2021)
 - 3,700 ED consults annually (non-trauma).
 - 1,900 OR cases annually (trauma and non-trauma).

- Catchment area for trauma is all of San Bernardino, Riverside, Mono, and Inyo counties (4 million human lives covered).
- Received trauma transfers from as far as Santa Barbara, Los Angeles, and Bakersfield.
- One of 3 ACS-verified Level 1 Adult and Peds trauma centers on the same campus in the state.
- Longest EMS-designated trauma center in Inland Empire.
- First ACS-verified level 1 trauma center in Inland Empire.
- Planned Resuscitative Endovascular Balloon Occlusion of Aorta (REBOA) center of excellence.
- Largest REBOA volume in Inland Empire (including in collaboration with OB for placental disorders).
- Most rib fixation procedures are done in Inland Empire.
- First to do minimally invasive rib fixation in Inland Empire.
- First to do robotic surgery on ACS service in Inland Empire.
- Top decile performance among trauma centers nationwide.
- Hypotensive trauma patients in the ED receive blood within 10 minutes of arrival or onset of hypotension 80% of the time.
- Patients with open tibia fractures receive antibiotics on average 25 minutes after arrival.



**For more information,
please scan the QR code
or click [here](#)**



SURGERY - COLON & RECTAL SURGERY



DIVISION HEAD
David Row, MD

ABOUT US

- The Division of Colon and Rectal Surgery of Loma Linda University Health is a national and international leader in minimally invasive and robotic surgery.
- Our expertise is in:
 - Advanced robotic colorectal surgery.
 - Rectal cancer treatment.
- Our team provides comprehensive management for a multitude of colorectal disorders and cancers, with treatments addressing anatomic and functional conditions of the colon, rectum, and pelvic organs.
- Our world-renowned experts are committed to excellence and deliver outstanding management and support to our patients in accordance with Loma Linda University's motto of whole person care.

LLUH is the only center or most performing in the Inland Empire for these procedures and services:

- Anal abscess/fistula.
- Anal cancer.
- Anal fissure.
- Anal warts.
- Bleeding in the digestive tract.
- Bowel incontinence.
- Colon cancer.
- Constipation.
- Crohn's disease.
- Diverticular disease.
- Fecal incontinence.
- Hemorrhoids.
- Obstructive defecation.
- Pelvic floor dysfunction.
- Pilonidal disease.
- Polyps of the colon and rectum.
- Pruritis ani.
- Rectal cancer.
- Rectal prolapse.
- Rectocele.
- Rectovaginal fistula.
- Ulcerative colitis.



For more information,
please scan the QR code
or click [here](#)





DIVISION HEAD, INTERIM
Sharon Lum, MD, MBA, FACS

ABOUT US

- We perform complex robotic surgeries at Loma Linda University Health including bariatric, foregut, ventral, and inguinal hernias and gallbladder surgery. We also perform complex abdominal wall hernia surgery, including, robotic, open, and laparoscopic approaches.
- We also offer natural orifice surgery, with endoluminal suturing techniques that require no incisions.
- The bariatric program at Loma Linda University Health has achieved the highest level of accreditation through the MBSAQIP as a comprehensive bariatric center.
- We are also a Blue Center of Distinction for bariatric surgery.
- Endoscopic interventions (eVac, endoscopic suturing and clipping for repair of gastric perforations/ gastrocutaneous fistulas/ Gastrogastric fistulas/ anastomotic stomal revisions, balloon dilations).
- Manometry and 24 hour pH probe.
- Complex abdominal wall reconstruction for ventral hernias, ventral incisional hernias, recurrent ventral hernias, parastomal hernias, malignant abdominal wall invasions (open, laparoscopic, robotic techniques, including TAPP, TEP and eTEP).
- Open, Laparoscopic and Robotic inguinal hernia repair.
- Open, Laparoscopic and Robotic femoral hernia repair.
- Open, Laparoscopic and Robotic groin neurectomy for chronic groin pain management.
- Laparoscopic and robotic cholecystectomy, laparoscopic common bile duct exploration, laparoscopic-assisted endoscopic surgeries (Laparoscopic-assisted ERCP, Laparoscopic on table enteroscopy for GI bleed treatment).
- Robotic Ladd's procedure for treatment of adult midgut malrotation syndrome.
- Robotic Median Arcuate Ligament Syndrome treatment.
- Multidisciplinary management of enterocutaneous fistulas
- Multidisciplinary management of hidradenitis suppurativa.

LLUH is the only center or most performing in the Inland Empire for these procedures and services:

- High volume robotic surgery center.
- POEM (peroral endoscopic myotomy), POP (peroral pyloromyotomy) and intragastric balloon to "endoscopic interventions".
- High volume center for laparoscopic and robotic weight loss surgeries (vertical sleeve gastrectomy and roux-en-y gastric bypass).
- High volume center for revisional bariatric surgery.
- Minimally invasive foregut program: Achalasia, Hiatal Hernias, Fundoplication, Lower esophageal sphincter augmentation (LINX), Concomitant Transoral Incisionless Fundoplication (C-TIF), Diaphragmatic Defects, Gastric Volvulus.



**For more information,
please scan the QR code
or click [here](#)**





DIVISION HEAD

Aaron Saunders, MD

ABOUT US

- The only comprehensive cancer center in the region, we provide our patients with a variety of treatment options.
- The Loma Linda University Cancer Center (LLUCC) is a Commission on Cancer accredited cancer program and a tertiary and quaternary referral center.
- LLUCC physicians treat complex and challenging neoplasms, integrating clinical research and state-of-the-art cancer care customized to an individual patient's needs. In addition, LLUCC researchers have revolutionized cancer care in several areas benefiting hundreds of thousands of patients.
- Innovation, research, and compassionate delivery of care with an emphasis on whole-person care that addresses the physical, emotional and spiritual needs of a patient have led to LLUH's recognition as a leader in the field of cancer care.

LLUH is the only center or most performing in the Inland Empire for these procedures and services:

- Robotic whipple procedure.
- Peritoneal surface surgical resection.
- Hyperthermic intraperitoneal chemotherapy (HIPEC).
- Robotic adrenalectomies.
- Large sarcomas —resections including pelvectomies.
- Complex liver resections.
- Pancreatic minimally invasive surgery.
- Robotic esophagectomies.
- Robotic gastrectomies.
- Nipple areola sparing mastectomies.
- Robotic complex colorectal resections.



For more information,
please scan the QR code
or click [here](#)





DIVISION HEAD

Michael de Vera, MD

ABOUT US

- Our Transplant Institute is the only comprehensive multi-organ transplant center in the region.
- We have performed over 4,500 kidney transplants and nearly 1,500 liver transplants, and almost 400 pancreas transplants, leading to national recognition of our abdominal transplant program. Our pancreas program leads the Western U.S. in annual transplants performed.
- Our Comprehensive Liver Center offers exceptional care for all liver-related diseases such as viral hepatitis, metabolic-associated steatohepatitis, and cirrhosis. We offer a multidisciplinary approach in the treatment of all types of hepatic malignancies in partnership with our medical oncology, interventional radiology, and radiation oncology colleagues.
- Our kidney program is able to transplant our patients sooner by performing ABO-incompatible transplants and desensitization of highly sensitized patients. We have a robust living donor kidney and paired exchange program.
- After a transplant, our diabetes patients can often live free from insulin injections, dialysis, and other diabetic complications.

LLUH is the only center or most performing in the Inland Empire for these procedures and services:

- Liver transplantation.
- Pancreas transplantation.
- Adult and pediatric kidney transplantation.
- Deceased and living donor kidney transplantation.
- Laparoscopic donor nephrectomies.
- Complex hepatopancreatobiliary (HPB) operations, both open and laparoscopic, such as liver resections, bile duct surgeries, pancreatectomies (pancreatoduodenectomies and distal pancreatectomies).



For more information,
please scan the QR code
or click [here](#)





DIVISION HEAD

Ghaleb A. Darwazeh, MD

ABOUT US

- Performs a wide range of complex and open endovascular procedures to treat all types of vascular diseases using state-of-the-art technologies.
- Our vascular surgeons draw on the expertise and assistance of many other specialists to create comprehensive, individualized treatment plans.
- They provide the highest level of surgical care for patients with conditions affecting the entire peripheral vascular system.

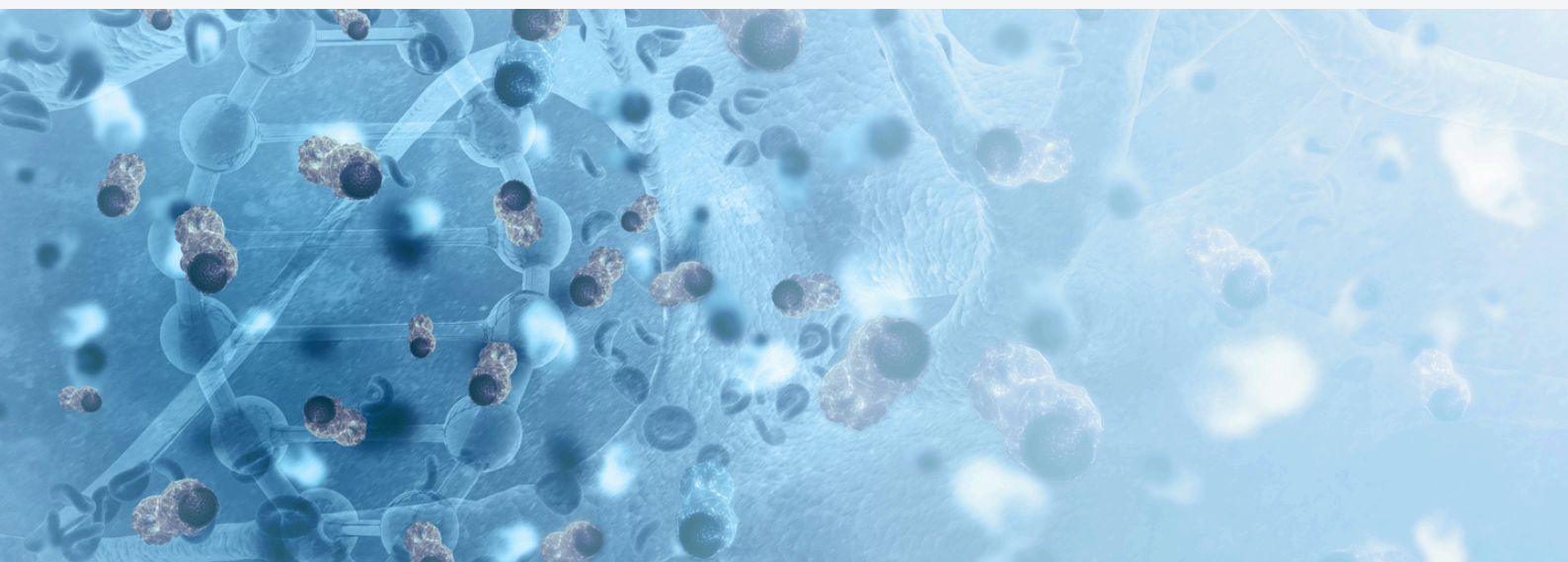
LLUH is the only center or most performing in the Inland Empire for these procedures and services:

- Complex endovascular repair of aortic aneurysms – physician-modified endograft.
- Open abdominal aortic aneurysm repair.
- Endovascular repair of abdominal aortic aneurysm.
- Open thoracic aortic aneurysm repair.
- Endovascular repair of thoracic aortic aneurysm.
- Trans-carotid artery revascularization.
- Open lower extremity revascularization.
- Endovascular treatment utilizing stents.
- Carotid endarterectomy (CEA).
- Carotid stenting (CAS).
- Perforator vein ablation.
- Minimally invasive saphenous vein ablation.
- Varicose vein excision.
- Sclerotherapy.
- Arteriovenous fistula.
- Arteriovenous graft.



For more information,
please scan the QR code
or click [here](#)





DIVISION HEAD

Hisham Abdel-Azim, MD

Patients diagnosed with cancer and blood diseases deserve every possible chance for cure. At Loma Linda University Cancer Center (LLUCC) we are providing the most advanced care for our patients.

LLUCC is the only comprehensive center of its kind in the Inland Empire that provides transplant and cellular therapy. We're pioneering research to find promising new treatments. Our specialized therapies treat cancer, blood diseases and other rare genetic and immune deficiency disorders.

ABOUT US

- Loma Linda University Health is the only center that provides state of the art transplant/cellular therapy and comprehensive care for hematological malignancies in the Inland Empire.
- We are the only institution accredited by the Foundation for the Accreditation of Cellular Therapies (FACT) in the Inland Empire.
- We offer comprehensive services across all age groups, at both Loma Linda University Medical Center and Children's Hospital, with seamless transition across pediatric and adult care. This is all located inside the medical school campus with full support from and availability of various subspecialties.

LLUH is the only center or most performing in the Inland Empire for these procedures and services:

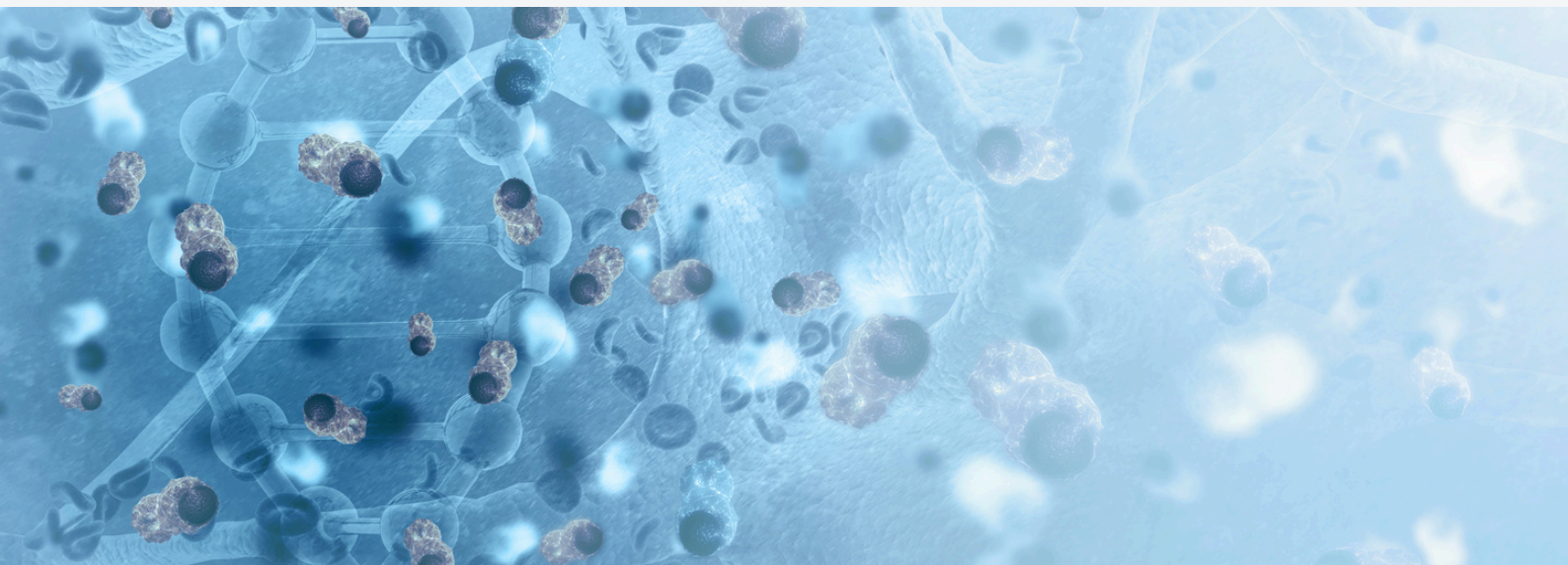
In addition to standard chemotherapy and immunotherapy we offer:

- Cell therapy using chimeric antigen receptor (CAR T) cells, natural killer (NK) cells, NK CAR cells and others immune cell-based (immune effector) therapies. These treatments use a person's own immune cells (or donor immune cells) to target cancer cells in blood cancers such as leukemia, lymphoma or myeloma. Cell therapy is also used to treat certain solid tumors.
- Gene Therapy using the person's own blood stem cells to modify a person's genes in these cells to treat or cure disease (e.g. gene therapy for sickle cell disease or thalassemia).
- Bone marrow transplants (BMT): this treatment uses marrow or peripheral blood stem cells either from same person (autologous) or a matched donor (allogeneic related or unrelated) to treat certain cancers, blood diseases, genetic, immunological, or metabolic disorders.



For more information,
please scan the QR code
or click here





- Cord blood transplants: this treatment uses matched (related and unrelated) cord blood to treat certain cancers, blood diseases, genetic, immunological, or metabolic disorders.
- Haploidentical (half-match) transplants: this treatment provides more options for patients who do not have a matched sibling or unrelated donor, which is increasingly common in our diverse population.
- Peripheral blood stem cells (PBSC), lymphocytes and bone marrow (BM) collections (autologous and allogeneic).
- Extracorporeal Photopheresis for TCT and non TCT related services.
- Sickle cell disease.
- Immune deficiencies (e.g. severe combined immunodeficiency (SCID)) and disorders such as hemophagocytic lymphohistiocytosis (HLH).
- Inherited bone marrow failure syndromes (e.g. Fanconi anemia).
- Inherited metabolic disorders (e.g. Leukodystrophies, Mucopolysaccharidoses).
- Osteopetrosis (marble bone disease).
- White blood cell disorders, including chronic granulomatous disease, severe congenital neutropenia and leukocyte adhesion deficiency.

Cancers and Blood Diseases we Treat:

- Acute lymphoblastic leukemia (ALL).
- Acute myeloid leukemia (AML).
- Hodgkin lymphoma.
- Non-Hodgkin lymphoma.
- Multiple myeloma.
- Myelodysplastic syndrome (MDS).
- Amyloidosis.
- Chronic myelomonocytic leukemia (CMML).
- Chronic lymphocytic leukemia (CLL).
- Chronic myeloid leukemia (CML).
- Cutaneous T cell lymphoma.
- Hairy cell leukemia.
- Juvenile myelomonocytic leukemia (JMML).
- Myeloproliferative disorders.
- Solid tumors, including germ cell tumors, neuroblastoma and Ewing's sarcoma.
- Brain tumors, including medulloblastoma.
- Aplastic anemia.
- Thalassemia.

Facilities

- Inpatient treatment is administered in 2 units (adults and pediatric units) that are HEPA filtered/laminar airflow beds to protect our vulnerable patients from infection.
- Outpatient treatment is administered in state-of-the-art infusion centers that provide multiple types of infusion and transfusion therapies in a comfortable setting to support patients and families during treatments.

Research

- We offer several clinical trials in Transplant/Cellular Therapy and Hematological Malignancies that offer additional and innovative treatment options for our patients.



For more information,
please scan the QR code
or click here





DEPARTMENT CHAIR
Herbert Ruckle, MD

ABOUT US

- The department of urology has a comprehensive array of sub-specialty urologic surgeons to support LLUH and has the only urology residency training program in our region.
- We have specialists with specific expertise in urologic cancer surgery, robotic and minimally invasive surgery, complex stone treatment, urologic reconstruction; male health, fertility and sexual function, uro-gynecology, and bladder function.
- The department works with other specialties in LLUH and has tumor boards and case conferences to make best practice treatment plans for unique and complex patients.
- Having a residency program promotes a high standard of care and the department is consistently ranked as "high performing" in US News & World Report
- Our providers promote holistic, whole-person care, team-oriented type of urologic practice
- We utilize experienced Nurse Practitioners to expand access in our out-patient offices when our surgeons are in the operating room.

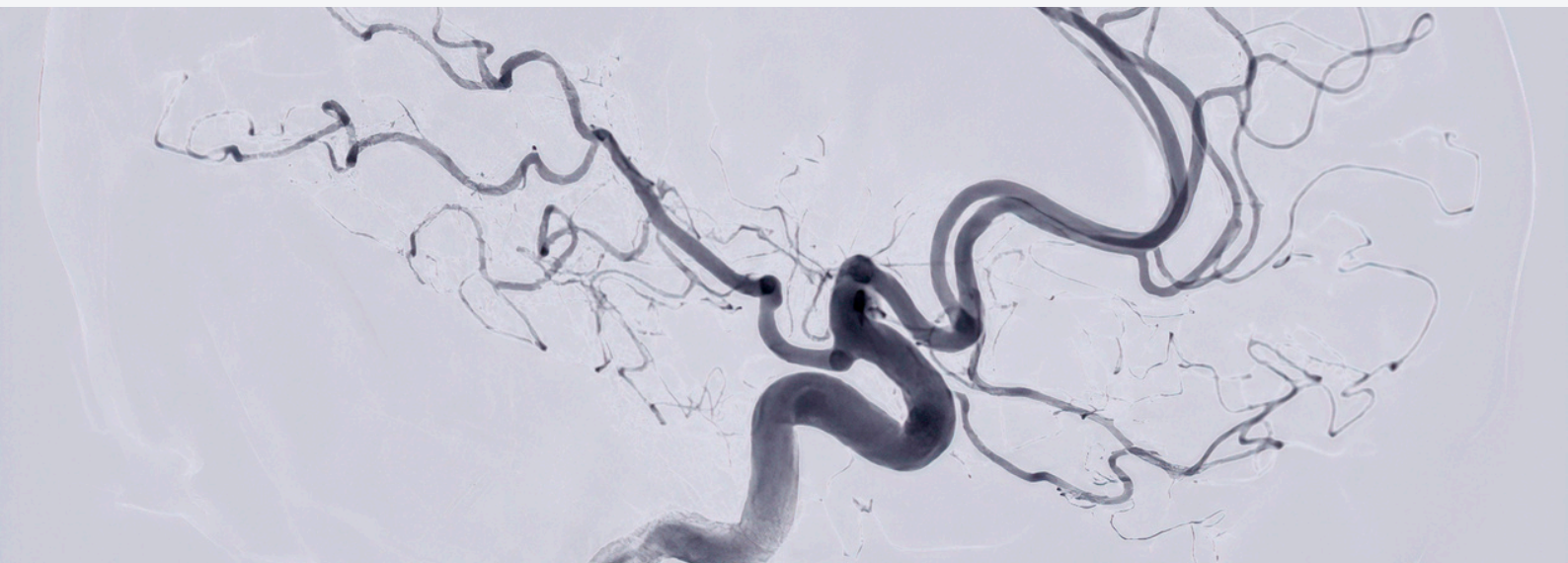
LLUH is the only center or most performing in the Inland Empire for these procedures and services:

- Robotic surgery including prostatectomy, cystectomy, nephrectomy, UPJ repair, repair of female pelvic prolapse.
- Multidisciplinary evaluation and treatment programs for prostate, bladder, kidney, and testicular cancers.
- Complex and minimally invasive stone surgery.
- Male fertility surgery; vasovasostomy.
- Penile prosthesis surgery and treatment of male sexual dysfunction.
- Artificial urinary sphincter surgery.
- Urethral stricture surgery.
- Treatment of Peyronie's syndrome.
- Men's health issues including working with lifestyle medicine to improve overall health and functionality.
- Elevated PSA, MRI fusion biopsy, cryotherapy.
- General urology procedures (ie circumcision, hydrocele, vasectomy).
- Urodynamic studies for bladder dysfunction.
- Treatment of BPH and male urination problems including minimally invasive surgery and in-office treatments.
- Coverage of urologic emergencies at LLUMC and Children's Hospital 24 hours a day.
- Bulkamid for stress urinary Incontinence.
- Sacral neuromodulation for overactive bladder.



**For more information,
please scan the QR code
or click [here](#)**





DIVISION HEAD
Jason Smith, MD

ABOUT US

- Interventional Radiology (IR) specializes in providing safe, compassionate, patient-centered care through the integration of clinical and image-based diagnosis and minimally invasive therapy. These procedures represent an advance in medicine that often affords an alternative to open surgical procedures.

LLUH is the only center or most performing in the Inland Empire for these procedures and services:

- Prostatic artery embolization for benign prostatic hypertrophy, hematuria.
- Uterine artery embolization for uterine fibroids, adenomyosis, and post-partum hemorrhage.
- Non-surgical percutaneous AV fistula (endoAVF) creation for hemodialysis access.
- Vascular interventions for maintenance and salvage of dialysis access.
- Angioplasty/atherectomy/stenting for peripheral arterial disease and critical limb ischemia.
- Renal artery stenting for renal artery stenosis.
- Radioembolization, chemoembolization and percutaneous ablation for tumors of the liver, kidney, lung, other sites.
- Adrenal or renal vein sampling for endocrine tumor workup.
- Testicular or ovarian vein embolization and pelvic vein sclerotherapy for symptomatic varicocele / pelvic congestion syndrome.
- MR lymphangiography and thoracic duct embolization for chylothorax, chylous ascites and plastic bronchitis.
- Complex venous recanalization/reconstruction for acute and chronic venous occlusion.
- Venous ablation for chronic venous insufficiency and varicose veins.
- Thrombectomy for DVT, pulmonary embolism.
- IVC filter placement for DVT/PE, removal of IVC filters including chronic, perforated, fractured and thrombosed devices.
- Port or central line placement for long-term venous access.
- Embolization for lymphatic or vascular malformation.
- Sclerotherapy.
- Percutaneous gastrostomy and gastrojejunostomy tube placement for long-term enteric access.
- Intravascular foreign body retrieval.
- Percutaneous drainage or stenting of obstructed renal and biliary systems.
- Abscess and fluid collection drainage.
- Percutaneous image-guided biopsy.
- Portal vein interventions including transjugular intrahepatic portosystemic shunt (TIPS) and balloon retrograde venous obliteration (BRTO) and variants.



**For more information,
please scan the QR code
or click [here](#)**



**Thank you to all our
unwavering supporters and
insightful contributors**

Our Mission
To continue the teaching and healing ministry of Jesus Christ



LOMA LINDA UNIVERSITY
FACULTY MEDICAL GROUP